

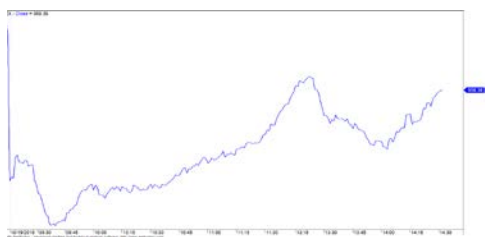
當日市場：本週市場將出現分歧

2018/10/22 投資日報

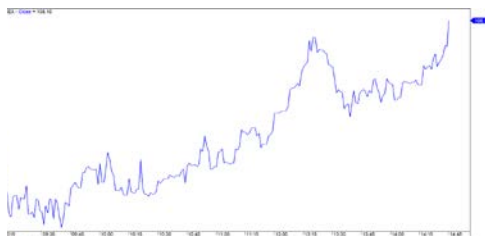
| 市場走勢 2018/10/19 | | | |
|------------------|----------|-----------|---------|
| 市場指數 | VN-Index | HNX-Index | UPCoM |
| 變動\收盤 | 958.36 | 108.10 | 52.47 |
| % 日 | -0.53% | 0.18% | -0.46% |
| % 周 | -1.21% | -1.51% | -0.53% |
| % 月 | -3.73% | -5.34% | 0.02% |
| % 年 | 15.61% | -0.90% | -3.80% |
| 成交值 (十億盾) | | | |
| 當日 | 3,874 | 479 | 253 |
| 前一日 | 3,598 | 522 | 266 |
| 月均 | 5,693 | 749 | 465 |
| 外資 (十億盾) | | | |
| 買進 | 388.29 | 22.84 | 12.69 |
| 賣出 | 600.39 | 34.51 | 43.19 |
| 買賣超 | (212.10) | (11.67) | (30.50) |
| 市場漲跌家數 | | | |
| 上漲家數 | 106 | 68 | 91 |
| 下跌家數 | 165 | 71 | 91 |
| 持平家數 | 107 | 241 | 655 |
| 市場指標 | | | |
| P/E 本益比 | 18.3x | 10.1x | 14.9x |
| 總市值 (兆盾) | 3,100 | 146 | 946 |
| 股息殖利率 | 2.84% | 2.57% | 3.57% |

源自: Bloomberg – Yuanta Retail Research

VN-INDEX



HNX-INDEX



市場走勢

由於美國股市走勢的負面影響，開盤時段各大股指大幅下挫，導致當日市場有巨大波動，然而，隨後各股指到盤尾有所回升。當日收盤，VN 指數收窄下跌勢頭，收於 958.36 點 (-0.53%)，而 HNX 指數小幅增長，收於 108.1 點 (+ 0.18%)。外資在 HOSE 上賣超值為 -2120 億盾，在 HNX 上為 -205 億盾，VNM，NVL，VIC，PVD 等股碼遭大力拋售，相反，HPG，SAB，VHC 卻獲外資積極買進。上週五是 ETF 基金參照 VN30 指數重組投資組合的一日，因此。ETF 的交易也對外資的交易結果產生了重大影響。

兩大證交所的股票存在分歧，部份由於 ETF 參照 VN30 指數的重組投資組合所影響，另一部份是因受第三季業績相關資訊的影響。此外，經歐盟委員會同意提交歐洲理事會 (EC) 批准正式簽署 EVFTA 並將其提交歐洲議會批准後，我們看到水產和紡織股族群繼續有積極走勢。TCM，TNG，STK，VHC，APC，ANV 是其中上述兩族群有積極走勢，且也是第三季度業績較好的股碼。

市場評論

我們認為市場在本週第一交易盤可能會在 VN 指數的 943-970 點價位內繼續進行拉鋸戰。同時，VN 指數的 970-990 點降價差距仍處於強勁阻力區，積極點是，低撈資金有逐漸增加的跡象，且短期風險也趨於降低。此外，股票比例仍維持低於 20%，因此，新買位僅適合於短線衝浪投資者。

我們的趨勢指標仍維持兩大股指短期趨勢下跌，阻力區位於 VN 指數的 982.05 點和 HNX 指數的 111.87 點。因此，我們建議短線投資者不宜在下跌期間進行拋售，且在回升期間仍該優先降低 margin 比例。同時，短線衝浪投資者仍可在下跌期間以較低比例支付為探討短期的低位，安全買位應等待上漲趨勢有所確定。

根據週期走勢圖，市場在本週交易內將持續拉鋸戰，市場將出現強大分歧，因將收到有關第三季度業績信息。同時，我們的趨勢指標仍維持 VN 指數的中期趨勢下跌，阻力區位在 1021 點，而 HNX 指數的中期趨勢上漲，停損區位於 105.72 點。此外，股票比例仍維持平衡。因此，我們建議中線投資者可考慮按建議比例累積股票。

短期投資組合建議比例：19% 的股票 / 81% 的現金

中期投資組合建議比例：54% 的股票 / 46% 的現金

(股票趨勢追蹤圖在下一頁內更新)



We Create Fortune

技術分析圖



VN-Index 指數的市場走勢



HNX-Index 指數的市場走勢

| | 短期趨勢 | 中期趨勢 | 阻力區 1 | 阻力區 2 | 支撐區 1 | 支撐區 2 |
|--------------|------|------|-------|-------|-------|-------|
| VN-Index 指數 | 下跌 | 下跌 | 1,000 | 1,044 | 955 | 890 |
| HNX-Index 指數 | 下跌 | 上漲 | 120.5 | 126.5 | 110.5 | 103.5 |

We Create **Fortune**
股票趨勢追蹤表

| 股票 | 價格 | 短期趨勢 | 中期趨勢 | 短期買價 | 短期停損 | 暫計短期利潤% | 短期信號 | 中期買價 | 中期停損 | 暫計中期利潤% | 中期信號 |
|-----|---------|------|------|--------|---------|---------|------|---------|---------|---------|------|
| AAA | 14,750 | 下跌 | 下跌 | | 15,886 | | | | 18,492 | | |
| ACB | 31,000 | 下跌 | 下跌 | | 32,917 | | | | 36,349 | | |
| ACV | 82,000 | 下跌 | 下跌 | | 85,008 | | | | 85,008 | | |
| ANV | 23,400 | 下跌 | 上漲 | | 24,136 | | | 21,450 | 18,671 | 9.09% | |
| ASM | 10,800 | 下跌 | 下跌 | | 11,668 | | | | 13,659 | | |
| BFC | 26,500 | 下跌 | 下跌 | | 27,247 | | | | 28,918 | | |
| BHN | 85,100 | 下跌 | 下跌 | | 87,719 | | | | 101,129 | | |
| BID | 34,600 | 下跌 | 上漲 | | 35,458 | | | 33,400 | 29,888 | 3.59% | |
| BMP | 61,700 | 上漲 | 上漲 | 64,400 | 58,621 | -4.19% | | 63,500 | 57,285 | -2.83% | |
| BSR | 16,900 | 下跌 | 上漲 | | 18,544 | | | 20,000 | 16,000 | -15.50% | |
| BVH | 92,000 | 下跌 | 上漲 | | 93,293 | | | 86,000 | 80,816 | 6.98% | |
| BWE | 19,700 | 下跌 | 上漲 | | 20,104 | | | 20,000 | 17,310 | -1.50% | |
| CEO | 13,200 | 下跌 | 下跌 | | 13,726 | | | | 14,906 | | |
| CHP | 22,800 | 下跌 | 上漲 | | 22,904 | | | 23,500 | 22,031 | -2.98% | |
| CSM | 15,500 | 下跌 | 上漲 | | 16,234 | | | 14,390 | 13,911 | 7.71% | |
| CTD | 154,500 | 下跌 | 上漲 | | 163,006 | | | 161,200 | 147,102 | -4.16% | |
| CTG | 24,700 | 下跌 | 上漲 | | 26,297 | | | 28,100 | 23,559 | -12.10% | |
| CTI | 25,850 | 下跌 | 下跌 | | 26,167 | | | | 29,000 | | |
| CVT | 26,000 | 下跌 | 下跌 | | 26,596 | | | | 29,203 | | |
| DCM | 10,200 | 下跌 | 上漲 | | 10,619 | | | 11,000 | 9,990 | -7.27% | |
| DGW | 25,400 | 下跌 | 上漲 | | 26,410 | | | 27,500 | 23,622 | -7.64% | |
| DHA | 29,000 | 上漲 | 上漲 | 28,200 | 28,471 | 2.84% | | 29,100 | 26,141 | -0.34% | |
| DHC | 43,500 | 下跌 | 上漲 | | 43,942 | | | 44,600 | 37,266 | -2.47% | |
| DHG | 88,100 | 下跌 | 下跌 | | 93,881 | | | | 102,921 | | |
| DPG | 50,900 | 上漲 | 上漲 | 40,900 | 49,955 | 24.45% | | 52,000 | 42,364 | -2.12% | |
| DPM | 18,000 | 下跌 | 上漲 | | 18,749 | | | 19,400 | 17,356 | -7.22% | |
| DPR | 38,650 | 上漲 | 上漲 | 38,800 | 37,734 | -0.39% | | 39,050 | 36,216 | -1.02% | |
| DQC | 31,000 | 上漲 | 上漲 | 30,000 | 28,998 | 3.33% | | 31,000 | 30,332 | 0.00% | |
| DRC | 24,500 | 下跌 | 上漲 | | 26,072 | | | 24,300 | 23,848 | 0.82% | |
| DXG | 28,700 | 上漲 | 上漲 | 28,900 | 27,165 | -0.69% | | 29,800 | 25,055 | -3.69% | |
| ELC | 8,240 | 下跌 | 下跌 | | 8,721 | | | | 10,270 | | |
| FCN | 15,350 | 上漲 | 上漲 | 15,600 | 14,734 | -1.60% | | 17,700 | 13,229 | -13.28% | |
| FIT | 3,740 | 下跌 | 下跌 | | 4,010 | | | | 4,610 | | |
| FMC | 27,750 | 下跌 | 上漲 | | 28,582 | | | 24,700 | 24,396 | 12.35% | |
| FPT | 43,000 | 下跌 | 上漲 | | 44,805 | | | 45,900 | 41,787 | -6.32% | |
| GAS | 112,000 | 下跌 | 上漲 | | 121,843 | | | 103,000 | 102,043 | 8.74% | |
| GEX | 26,800 | 下跌 | 上漲 | | 28,417 | | | 30,100 | 25,966 | -10.96% | |
| GIL | 37,300 | 下跌 | 上漲 | | 39,153 | | | 34,900 | 34,848 | 6.88% | |
| GMD | 27,400 | 下跌 | 上漲 | | 27,568 | | | 27,300 | 23,988 | 0.37% | |
| GTN | 10,900 | 下跌 | 上漲 | | 11,734 | | | 11,200 | 9,931 | -2.68% | |
| HAG | 5,280 | 下跌 | 下跌 | | 5,499 | | | | 6,858 | | |



We Create Fortune

| | | | | | | | | | | | |
|-----|---------|----|----|---------|---------|--------|--|---------|---------|---------|---|
| HAX | 16,400 | 下跌 | 上漲 | | 17,010 | | | 18,500 | 15,549 | -11.35% | |
| HBC | 24,350 | 上漲 | 下跌 | 24,900 | 23,326 | -2.21% | | | 26,744 | | |
| HDB | 36,300 | 下跌 | 下跌 | | 37,567 | | | | 42,049 | | |
| HNG | 15,700 | 下跌 | 上漲 | | 15,822 | | | 8,200 | 14,249 | 91.46% | |
| HPG | 40,750 | 下跌 | 下跌 | | 41,612 | | | | 42,501 | | |
| HSG | 11,350 | 下跌 | 下跌 | | 12,405 | | | | 13,043 | | |
| HT1 | 12,650 | 下跌 | 上漲 | | 13,718 | | | 13,000 | 12,067 | -2.69% | |
| HUT | 6,000 | 上漲 | 下跌 | 6,000 | 5,468 | 0.00% | | | 6,472 | | |
| HVN | 35,600 | 下跌 | 上漲 | | 38,277 | | | 39,200 | 34,035 | -9.18% | |
| ITD | 11,600 | 下跌 | 上漲 | | 12,522 | | | 12,400 | 10,580 | -6.45% | |
| KBC | 12,550 | 下跌 | 上漲 | | 13,159 | | | 13,450 | 11,580 | -6.69% | |
| KDH | 32,850 | 下跌 | 上漲 | | 34,216 | | | 33,400 | 30,498 | -1.65% | |
| KSB | 31,650 | 下跌 | 上漲 | | 33,663 | | | 34,200 | 29,754 | -7.46% | |
| LCG | 9,360 | 上漲 | 上漲 | 9,650 | 9,113 | -3.01% | | 9,390 | 8,579 | -0.32% | |
| LDG | 18,200 | 上漲 | 上漲 | 18,000 | 16,478 | 1.11% | | 16,500 | 14,606 | 10.30% | |
| LIX | 49,400 | 上漲 | 上漲 | 41,200 | 47,511 | 19.90% | | 44,400 | 44,310 | 11.26% | |
| LPB | 9,500 | 下跌 | 下跌 | | 10,112 | | | | 10,880 | | |
| LSS | 7,800 | 下跌 | 上漲 | | 8,051 | | | 7,890 | 6,353 | -1.14% | |
| MPC | 44,800 | 下跌 | 上漲 | | 51,796 | | | 46,700 | 40,579 | -4.07% | |
| MSN | 81,000 | 下跌 | 下跌 | | 84,253 | | | 90,600 | 81,247 | -10.32% | 賣 |
| MSR | 21,400 | 上漲 | 上漲 | 22,400 | 19,416 | -4.46% | | 19,884 | 17,837 | 7.63% | |
| MWG | 125,100 | 下跌 | 上漲 | | 131,214 | | | 121,000 | 114,428 | 3.39% | |
| NKG | 13,100 | 下跌 | 下跌 | | 14,121 | | | | 15,537 | | |
| NLG | 30,800 | 下跌 | 上漲 | | 32,036 | | | 32,400 | 28,354 | -4.94% | |
| NT2 | 24,900 | 下跌 | 下跌 | | 26,606 | | | | 27,146 | | |
| NTL | 9,800 | 下跌 | 上漲 | | 9,947 | | | 10,450 | 9,106 | -6.22% | |
| NTP | 45,200 | 下跌 | 上漲 | | 49,966 | | | 51,500 | 43,274 | -12.23% | |
| PAC | 45,800 | 上漲 | 上漲 | 46,500 | 43,427 | -1.51% | | 44,100 | 40,605 | 3.85% | |
| PC1 | 25,400 | 下跌 | 上漲 | | 27,318 | | | 28,500 | 24,735 | -10.88% | |
| PDR | 26,500 | 下跌 | 下跌 | | 27,038 | | | | 28,768 | | |
| PGC | 14,500 | 上漲 | 下跌 | 14,350 | 14,358 | 1.05% | | | 15,410 | | |
| PHR | 29,200 | 上漲 | 上漲 | 29,300 | 27,386 | -0.34% | | 24,000 | 23,984 | 21.67% | |
| PLX | 62,000 | 下跌 | 下跌 | | 66,407 | | | 68,000 | 62,920 | -7.47% | 賣 |
| PNJ | 104,200 | 下跌 | 上漲 | | 108,862 | | | 103,900 | 91,800 | 0.29% | |
| POW | 14,200 | 下跌 | 上漲 | | 15,770 | | | 14,100 | 14,039 | 0.71% | |
| PPC | 18,700 | 下跌 | 上漲 | | 19,617 | | | 20,100 | 18,068 | -6.97% | |
| PTB | 64,000 | 下跌 | 上漲 | | 69,155 | | | 64,000 | 56,808 | 0.00% | |
| PVD | 18,700 | 下跌 | 上漲 | | 20,229 | | | 16,350 | 17,404 | 14.37% | |
| PVI | 33,400 | 上漲 | 上漲 | 29,900 | 32,725 | 11.71% | | 33,000 | 30,008 | 1.21% | |
| PVS | 20,800 | 下跌 | 上漲 | | 22,152 | | | 20,900 | 19,451 | -0.48% | |
| PXS | 5,750 | 下跌 | 上漲 | | 6,326 | | | 6,190 | 5,688 | -7.11% | |
| RAL | 95,000 | 下跌 | 上漲 | | 101,263 | | | 103,600 | 86,744 | -8.30% | |
| REE | 33,800 | 下跌 | 上漲 | | 35,915 | | | 36,400 | 32,799 | -7.14% | |
| SAB | 220,000 | 上漲 | 下跌 | 208,000 | 218,484 | 5.77% | | | 231,449 | | |
| SAM | 7,880 | 上漲 | 上漲 | 7,710 | 7,484 | 2.20% | | 7,750 | 7,064 | 1.68% | |
| SBV | 25,000 | 上漲 | 下跌 | 26,200 | 23,861 | -4.58% | | | 26,952 | | |



We Create Fortune

| | | | | | | | | | | |
|-----|---------|----|-----|--------|---------|--------|---|---------|---------|---------|
| SCR | 8,700 | 下跌 | 下跌 | | 9,155 | | | 10,299 | | |
| SHI | 6,440 | 上漲 | 上漲 | 6,270 | 6,422 | 2.71% | | 6,990 | 5,879 | -7.87% |
| SJS | 16,900 | 下跌 | 下跌 | | 17,945 | | | 21,313 | | |
| SKG | 17,300 | 下跌 | 下跌 | | 20,429 | | | 23,100 | 21,129 | -8.53% |
| SSI | 30,150 | 下跌 | 下跌 | | 31,882 | | | 33,128 | | |
| STB | 13,450 | 下跌 | 上漲 | | 13,632 | | | 13,500 | 12,210 | -0.37% |
| SVC | 45,000 | 上漲 | 下跌 | 44,900 | 44,076 | 0.22% | | | 47,578 | |
| TCB | 29,000 | 下跌 | 下跌 | | 29,771 | | | | N/A | |
| TCM | 27,800 | 下跌 | 上漲 | | 28,399 | | | 21,600 | 25,000 | 28.70% |
| TDH | 11,300 | 下跌 | 下跌 | | 12,175 | | | | 12,707 | |
| TLH | 7,100 | 下跌 | 下跌 | | 7,360 | | | | 7,977 | |
| TMT | 11,400 | 上漲 | 上漲 | 9,840 | 9,923 | 15.85% | | 9,290 | 8,296 | 22.71% |
| TNG | 17,000 | 上漲 | 上漲 | 17,000 | 16,610 | 0.00% | 買 | 12,000 | 14,388 | 41.67% |
| TYA | 10,550 | 上漲 | 下跌 | 10,700 | 10,250 | -1.40% | | | 11,664 | |
| VCB | 57,700 | 下跌 | 上漲 | | 61,176 | | | 64,600 | 55,342 | -10.68% |
| VFG | 36,700 | 上漲 | 上漲 | 36,800 | 33,769 | -0.27% | | 34,394 | 32,564 | 6.71% |
| VGC | 16,800 | 下跌 | 下跌 | | 17,955 | | | | 21,062 | |
| VHM | 74,800 | 下跌 | 下跌 | | 78,730 | | | | 89,003 | |
| VIB | 27,800 | 下跌 | 下跌 | | 28,943 | | | | 30,672 | |
| VIC | 99,100 | 上漲 | 上漲 | 98,600 | 93,809 | 0.51% | | 111,500 | 92,438 | -11.12% |
| VIP | 7,010 | 上漲 | 下跌 | 7,120 | 6,963 | -1.54% | | | 7,294 | |
| VJC | 132,000 | 下跌 | 下跌 | | 144,326 | | | 156,000 | 132,309 | -15.19% |
| VNM | 126,800 | 下跌 | 下跌 | | 130,749 | | | | 139,872 | |
| VPB | 23,900 | 下跌 | 下跌 | | 25,055 | | | | 29,355 | |
| VPI | 42,200 | 上漲 | N/A | 41,750 | 41,783 | 1.08% | | | N/A | |
| VRC | 22,200 | 下跌 | 上漲 | | 23,402 | | | 19,350 | 20,785 | 14.73% |
| VRE | 37,050 | 下跌 | 下跌 | | 39,351 | | | | 43,794 | |
| VSC | 43,000 | 下跌 | 上漲 | 42,900 | 43,341 | 1.03% | 賣 | 35,300 | 39,024 | 21.81% |
| VSH | 17,600 | 上漲 | 上漲 | 17,700 | 17,321 | -0.56% | | 17,400 | 16,642 | 1.15% |



We Create Fortune

胡志明市證券交易所 (HSX)

| | 收盤 | 漲跌% |
|----------|----------|--------|
| VNI | 958.36 | -0.53% |
| VN30 | 931.69 | -0.62% |
| VN Mid | 1,009.34 | -0.04% |
| VN Small | 829.70 | -0.24% |

| 外資交易 | 成交值 (十億盾) | |
|------|--------------|--|
| 買 | 388.29 | |
| 賣 | 600.39 | |
| 買賣超 | (212.10) | |

上漲前五名：

| 股票代碼* | 上漲 (VND) | 漲跌% |
|-------|----------|-------|
| HNG | 700 | 4.67% |
| VHC | 4100 | 4.57% |
| TCM | 1100 | 4.12% |
| TTF | 200 | 3.77% |
| HAG | 180 | 3.53% |

下跌前五名：

| 股票代碼* | 下跌 (VND) | 漲跌% |
|-------|----------|--------|
| SKG | -1,300 | -6.99% |
| TIX | -2,600 | -6.84% |
| AMD | -200 | -5.38% |
| SJF | -600 | -4.80% |
| VRC | -800 | -3.48% |

市值前五大：

| 股票代碼* | 市值 (十億盾) | |
|-------|-------------|--|
| VIC | 316,290 | |
| VHM | 250,544 | |
| VNM | 220,813 | |
| GAS | 214,362 | |
| VCB | 207,591 | |

交易量前五名：

| 股票代碼 | 成交值 | 漲跌% |
|------|------|--------|
| STB | 8.33 | -0.37% |
| PVD | 5.35 | -1.58% |
| HAG | 5.11 | 3.53% |
| MBB | 5.06 | -0.71% |
| HPG | 4.99 | -0.61% |

* 備註：市值 > 5.000 億盾，成交值 > 15 億盾

源自: Bloomberg & Yuanta Research

河內證券交易所 (HSX)

| | 收盤 | 漲跌% |
|-----------|--------|--------|
| HNI | 108.10 | 0.18% |
| HN30 | 196.91 | 0.30% |
| VNX AllSh | 888.64 | -0.43% |

| 外資交易 | 成交值 (十億盾) | |
|------|--------------|--|
| 買 | 22.84 | |
| 賣 | 34.51 | |
| 買賣超 | (11.67) | |

| 股票代碼* | 上漲 (VND) | 漲跌% |
|-------|----------|-------|
| CEO | 500 | 3.94% |
| VCS | 2500 | 3.50% |
| HUT | 200 | 3.45% |
| TNG | 500 | 3.03% |
| NVB | 200 | 2.08% |

| 股票代碼* | 下跌 (VND) | 漲跌% |
|-------|----------|--------|
| ART | -300 | -5.45% |
| PVI | -100 | -0.30% |

| 股票代碼* | 市值 (十億盾) | |
|-------|-------------|--|
| ACB | 38,662 | |
| VCS | 11,840 | |
| SHB | 9,745 | |
| PVS | 9,291 | |
| VCG | 8,348 | |

| 股票代碼 | 成交值 | 漲跌% |
|------|------|--------|
| SHB | 7.06 | 0.00% |
| PVS | 4.72 | 0.97% |
| HUT | 2.67 | 3.45% |
| ART | 2.23 | -5.45% |
| ACB | 2.19 | 0.00% |

源自: Bloomberg & Yuanta Research

UPCoM 證券交易所 (UPCoM)

| | 收盤 | 漲跌% |
|-------|-------|--------|
| UPCoM | 52.47 | -0.46% |

| 外資交易 | 成交值 (十億盾) | |
|------|--------------|--|
| 買 | 12.69 | |
| 賣 | 43.19 | |
| 買賣超 | (30.50) | |

| 股票代碼* | 上漲 (VND) | 漲跌% |
|-------|----------|-------|
| NTC | 2200 | 2.96% |
| VEA | 500 | 1.49% |
| VIB | 300 | 1.09% |
| VGT | 100 | 0.78% |

| 股票代碼* | 下跌 (VND) | 漲跌% |
|-------|----------|--------|
| SSN | -1000 | -6.90% |
| IDC | -1300 | -6.10% |
| POW | -400 | -2.74% |
| VGI | -400 | -1.79% |
| MPC | -800 | -1.75% |

| 股票代碼* | 市值 (十億盾) | |
|-------|-------------|--|
| ACV | 175,916 | |
| BSR | 51,893 | |
| MCH | 51,844 | |
| HVN | 49,623 | |
| VGI | 48,320 | |

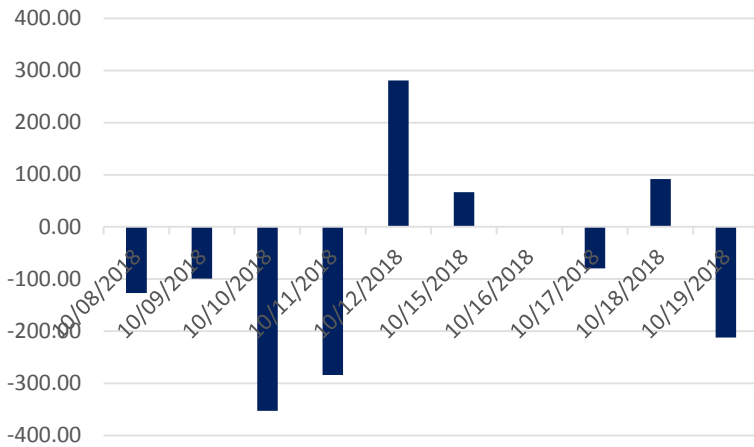
| 股票代碼 | 成交值 | 漲跌% |
|------|----------|-------|
| NTC | 2,200.00 | 2.96% |
| VEA | 500.00 | 1.49% |
| VIB | 300.00 | 1.09% |
| VGT | 100.00 | 0.78% |
| BSR | - | 0.00% |

源自: Bloomberg & Yuanta Research



We Create Fortune

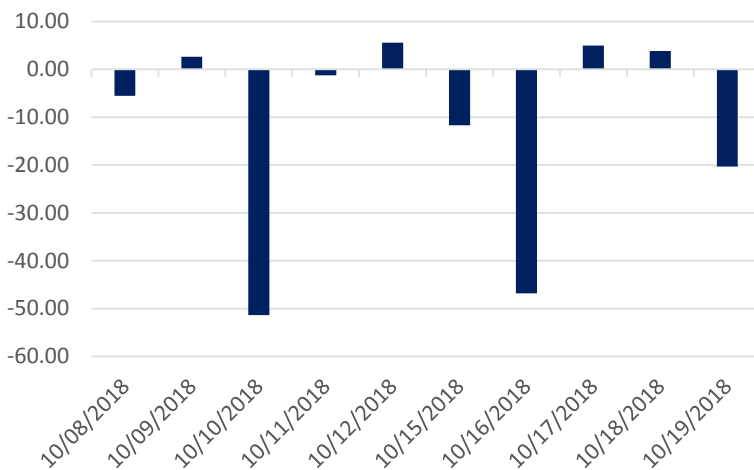
HSX 外資每日買/賣超 (bil. VND)



| 證券代碼 | 買超金額 (百萬盾) | 證券代碼 | 賣超金額 (百萬盾) |
|------|------------|------|------------|
| HPG | 49,486 | VNM | (43,217) |
| SAB | 13,855 | NVL | (37,508) |
| VHC | 10,629 | VIC | (34,312) |
| SSI | 7,019 | PVD | (30,944) |
| CTD | 5,560 | VJC | (26,766) |

HSX 外資買/賣的 TOP 5 股票

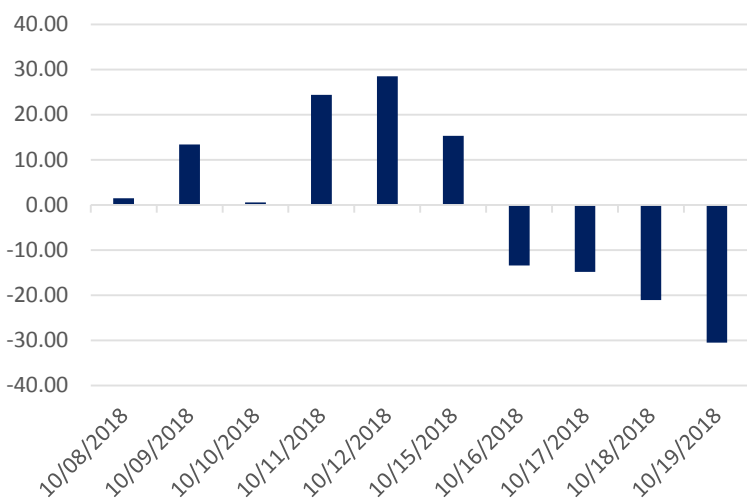
HNX 外資每日買/賣超 (bil. VND)



| 證券代碼 | 買超金額 (百萬盾) | 證券代碼 | 賣超金額 (百萬盾) |
|------|------------|------|------------|
| CEO | 3,057 | SHB | (13,650) |
| SHS | 477 | PVS | (7,562) |
| SRA | 432 | VCS | (1,390) |
| VGC | 386 | VCG | (760) |
| TV2 | 279 | PVX | (727) |

HNX 外資買/賣的 TOP 5 股票

UPCOM 外資每日買/賣超 (bil. VND)



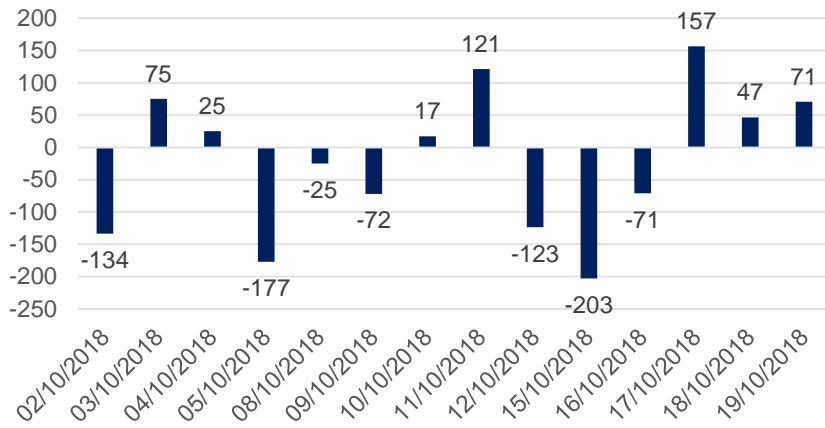
| 證券代碼 | 買超金額 (百萬盾) | 證券代碼 | 賣超金額 (百萬盾) |
|------|------------|------|------------|
| QNS | 3,183 | VEA | (18,708) |
| HVN | 1,897 | MPC | (10,188) |
| VGG | 364 | POW | (4,910) |
| GEG | 282 | BSR | (2,459) |
| EMS | 160 | CTR | (669) |

UPCoM 外資買/賣的 TOP 5 股票

We Create Fortune

自營交易統計

自營商交易每日買/賣超 (bil. VND)

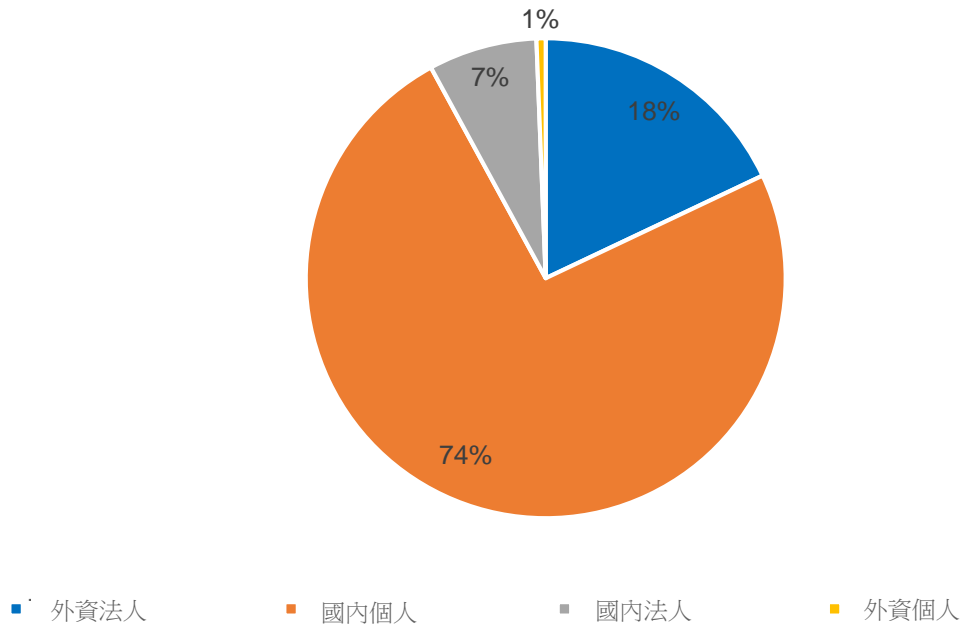


| 證券代碼 | 買進金額 (百萬盾) | 證券代碼 | 賣出金額 (百萬盾) |
|------|------------|---------|------------|
| VIC | 41,995 | VIC | 44,938 |
| NVL | 35,538 | NVL | 33,352 |
| MSN | 32,942 | HPG | 22,491 |
| VNM | 25,492 | E1VFN30 | 7,608 |
| MWG | 17,099 | VNM | 7,201 |

自營商交易 Top 5 個股

越南證券市場投資人占比

HSX 投資人占比

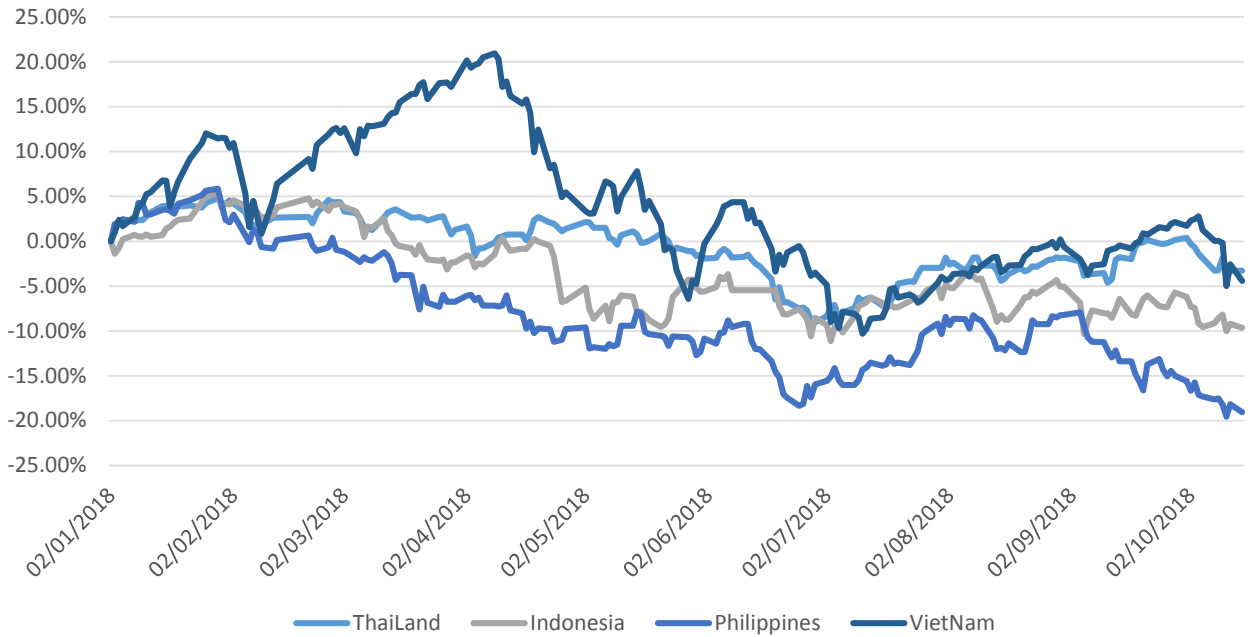


源自: FiinPro – Yuanta Retail Research



We Create Fortune

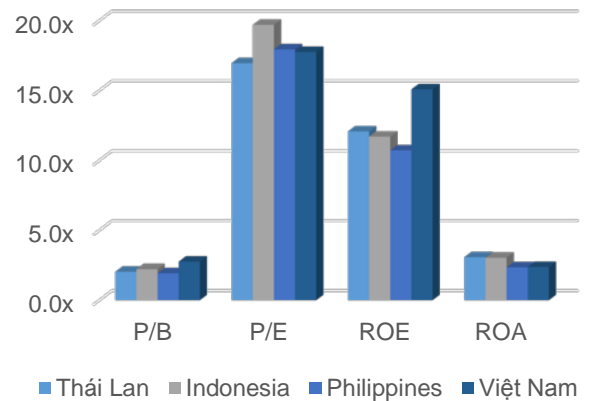
東南亞主要市場走勢比較



東南亞主要市場數據

| | | 泰國 | 印尼 | 菲律賓 | 越南 |
|-------|-------------|--------|--------|--------|--------|
| P/B | | 15.7x | 15.7x | 18.1x | 16.7x |
| P/E | | 12.07 | 11.70 | 10.72 | 15.09 |
| ROE | % | 3.08 | 3.04 | 2.36 | 2.38 |
| ROA | % | 519.46 | 431.15 | 163.95 | 136.91 |
| 市值 | bil. USD | 1.40 | 0.28 | 0.05 | 0.15 |
| 成交金額 | mil. USD | 2.94 | 2.34 | 1.69 | 2.07 |
| 股息殖利率 | % | 2.92 | 2.36 | 1.67 | 2.01 |

源自: Bloomberg & Yuanta Research



■ Thái Lan ■ Indonesia ■ Philippines ■ Việt Nam



We Create **Fortune**

YUANTA SECURITIES VIETNAM JOINT STOCK COMPANY

個人客戶分析部門

Nguyen The Minh

研究分析經理

+84 28 3622 6868 ext 3826

minh.nguyen@yuantan.com

Quach Duc Khanh

高級分析專員

+84 28 3622 6868 ext 3833

khanh.quach@yuantan.com

Nguyen Trinh Ngoc Hong

分析專員

+84 28 3622 6868 ext 3832

hong.nguyen@yuantan.com

個人客戶經紀部門

Nguyen Thanh Tung

總公司經紀部經理

+84 28 3622 6868 ext 3609

tung.nguyen@yuantan.com.vn

Chung Kim Hoa 鍾金華

華人客戶部經理

+84 28 3622 6868 ext 3828

hoa.chung@yuantan.com.vn

Phu Vinh Que

Cho Lon 分支經理

+84 28 3622 6868

que.phu@yuantan.com.vn

Nguyen Viet Quang

Ha Noi 分支經理

+84 28 3622 6868 ext 3404

quang.nguyen@yuantan.com.vn

Vo Thi Thu Thuy

Binh Duong 分支經理

+84 28 3622 6868 ext 3505

thuy.vo@yuantan.com.vn

Bui Quoc Phong

Dong Nai 分支經理

+84 28 3622 6868

phong.bui@yuantan.com.vn



We Create **Fortune**

Appendix A: Important Disclosures

Analyst Certification

Each research analyst primarily responsible for the content of this research report, in whole or in part, certifies that with respect to each security or issuer that the analyst covered in this report: (1) all of the views expressed accurately reflect his or her personal views about those securities or issuers; and (2) no part of his or her compensation was, is, or will be, directly or indirectly, related to the specific recommendations or views expressed by that research analyst in the research report.

Ratings Definitions

BUY: We have a positive outlook on the stock based on our expected absolute or relative return over the investment period. Our thesis is based on our analysis of the company's outlook, financial performance, catalysts, valuation and risk profile. We recommend investors add to their position.

HOLD-Outperform: In our view, the stock's fundamentals are relatively more attractive than peers at the current price. Our thesis is based on our analysis of the company's outlook, financial performance, catalysts, valuation and risk profile.

HOLD-Underperform: In our view, the stock's fundamentals are relatively less attractive than peers at the current price. Our thesis is based on our analysis of the company's outlook, financial performance, catalysts, valuation and risk profile.

SELL: We have a negative outlook on the stock based on our expected absolute or relative return over the investment period. Our thesis is based on our analysis of the company's outlook, financial performance, catalysts, valuation and risk profile. We recommend investors reduce their position.

Under Review: We actively follow the company, although our estimates, rating and target price are under review.

Restricted: The rating and target price have been suspended temporarily to comply with applicable regulations and/or Yuanta policies.

Note: Yuanta research coverage with a Target Price is based on an investment period of 12 months. Greater China Discovery Series coverage does not have a formal 12 month Target Price and the recommendation is based on an investment period specified by the analyst in the report.

Global Disclaimer

© 2018 Yuanta. All rights reserved. The information in this report has been compiled from sources we believe to be reliable, but we do not hold ourselves responsible for its completeness or accuracy. It is not an offer to sell or solicitation of an offer to buy any securities. All opinions and estimates included in this report constitute our judgment as of this date and are subject to change without notice.

This report provides general information only. Neither the information nor any opinion expressed herein constitutes an offer or invitation to make an offer to buy or sell securities or other investments. This material is prepared for general circulation to clients and is not intended to provide tailored investment advice and does not take into account the individual financial situation and objectives of any specific person who may receive this report. Investors should seek financial advice regarding the appropriateness of investing in any securities, investments or investment strategies discussed or recommended in this report. The information contained in this report has been compiled from sources believed to be reliable but no representation or warranty, express or implied, is made as to its accuracy, completeness or correctness. This report is not (and should not be construed as) a solicitation to act as securities broker or dealer in any jurisdiction by any person or company that is not legally permitted to carry on such business in that jurisdiction.

Yuanta research is distributed in the United States only to Major U.S. Institutional Investors (as defined in Rule 15a-6 under the Securities Exchange Act of 1934, as amended and SEC staff interpretations thereof). All transactions by a US person in the securities mentioned in this report must be effected through a registered broker-dealer under Section 15 of the Securities Exchange Act of 1934, as amended. Yuanta research is distributed in Taiwan by Yuanta Securities Investment Consulting. Yuanta research is distributed in Hong Kong by Yuanta Securities (Hong Kong) Co. Limited, which is licensed in Hong Kong by the Securities and Futures Commission for regulated activities, including Type 4 regulated activity (advising on securities). In Hong Kong, this research report may not be redistributed, retransmitted or disclosed, in whole or in part or any form or manner, without the express written