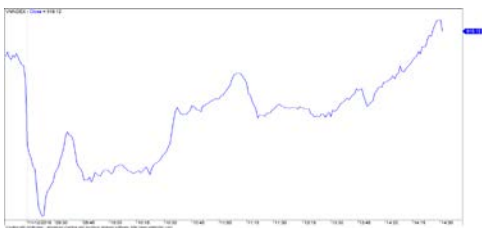


| 市場走勢 2018/11/12  |          |           |        |
|------------------|----------|-----------|--------|
| 市場指數             | VN-Index | HNX-Index | UPCoM  |
| 變動\收盤            | 918.12   | 103.37    | 51.66  |
| % 日              | 0.42%    | 0.35%     | 0.14%  |
| % 周              | -0.80%   | -2.06%    | 0.21%  |
| % 月              | -5.36%   | -5.82%    | -2.07% |
| % 年              | 5.85%    | -2.82%    | -2.23% |
| <b>成交值 (十億盾)</b> |          |           |        |
| 當日               | 2,704    | 405       | 225    |
| 前一日              | 2,824    | 437       | 208    |
| 月均               | 3,618    | 515       | 255    |
| <b>外資 (十億盾)</b>  |          |           |        |
| 買進               | 299.29   | 46.98     | 20.91  |
| 賣出               | 523.83   | 16.69     | 3.56   |
| 買賣超              | (224.54) | 30.29     | 17.35  |
| <b>市場漲跌家數</b>    |          |           |        |
| 上漲家數             | 123      | 70        | 60     |
| 下跌家數             | 161      | 69        | 75     |
| 持平家數             | 94       | 241       | 702    |
| <b>市場指標</b>      |          |           |        |
| P/E 本益比          | 16.7x    | 9.4x      | 14.8x  |
| 總市值 (兆盾)         | 2,944    | 142       | 907    |
| 股息殖利率            | 3.18%    | 2.81%     | 3.58%  |

源自: Bloomberg – Yuanta Retail Research

### VN-INDEX



### HNX-INDEX



## 市場走勢

當日，亞洲市場存在較明顯分歧，日本、中國、台灣等各大市場漲勢良好，其中，Shanghai 指數漲幅超過 1.2%，深圳漲 2.4%。相反，韓國、新加坡、印度、泰國市場卻盤整呈跌。盤終越南市場需求力大增，已推動所有股指位於平盤區上，VN 指數漲 0.42%，收於 918 點。HNX 指數亦漲 0.35%，收於 103 點，Upcom 指數收於 51.66 點觸及平盤位。

隨市場總成交值約 3.3 兆盾，市場流動性仍沒有太大改善。現金流重返市場，導致 SAB，GAS，BID，BVH，VCB，PLX 等多支大型股走漲。此外，石油、證券、零售等多個板塊亦有所反彈。以及房地產和水產股票增長良好，有助支撐市場交易更積極。

經 5 盤買超後，外資在 HSX 上重回賣超，總值逾達 2240 億盾。然而，這賣超量僅集中到遭外資拋售近 2270 億盾的 VIC 股上，因此，若排除上述的突變，外資仍小幅買超 SBT、GMD 和 CCQ E1VFN30。而 HNX 和 Upcom 上，卻買超 PVS，CEO，BSR 等股碼，值近 500 億盾。

## 市場評論

我們預計今天市場可能會繼續回升至 VN 指數 927 點附近。積極點是現金流盤終有所增長，尤其是石油板塊和中型股類，其中最亮點是水產股類。同時，市場仍小幅波動，因此，市場將繼續存在分歧，流動性將持於低位。此外，股票比例繼續略有降低，表明短期策略仍需謹慎。

我們的趨勢指標仍維持 VN 指數的短期趨勢上漲，止損區位於 VN 指數的 898.72 點，及 HNX 指數的短期趨勢下跌，阻力區位於 106.09 點。因此，我們建議短線投資者可繼續觀察市場走勢，且維持當前的股票比例。同時，短線投資者可重組投資組合，並關注每隻股票的走勢。

**短期投資組合建議比例：41% 的股票 / 59% 的現金**

(股票趨勢追蹤圖在下一頁內更新)



We Create Fortune

### 技術分析圖



VN-Index 指數的市場走勢



HNX-Index 指數的市場走勢

|              | 短期趨勢 | 中期趨勢 | 阻力區 1 | 阻力區 2 | 支撐區 1 | 支撐區 2 |
|--------------|------|------|-------|-------|-------|-------|
| VN-Index 指數  | 上漲   | 下跌   | 930   | 972   | 897   | 780   |
| HNX-Index 指數 | 下跌   | 下跌   | 110   | 117   | 100   | 96    |

We Create Fortune

股票趨勢追蹤表

| 股票  | 價格      | 短期趨勢 | 中期趨勢 | 短期買價    | 短期停損    | 暫計短期利潤% | 短期信號 | 中期買價   | 中期停損    | 暫計中期利潤% | 中期信號 |
|-----|---------|------|------|---------|---------|---------|------|--------|---------|---------|------|
| AAA | 14,600  | 上漲   | 下跌   | 14,700  | 14,061  | -0.68%  |      |        | 16,840  |         |      |
| ACB | 28,700  | 上漲   | 下跌   | 30,300  | 27,768  | -5.28%  |      |        | 34,696  |         |      |
| ACV | 82,600  | 下跌   | 下跌   |         | 82,801  |         |      |        | 85,008  |         |      |
| ANV | 29,850  | 上漲   | 上漲   | 24,200  | 25,649  | 23.35%  |      | 21,450 | 20,240  | 39.16%  |      |
| ASM | 10,650  | 上漲   | 下跌   | 11,200  | 10,173  | -4.91%  |      |        | 12,622  |         |      |
| BFC | 26,400  | 上漲   | 下跌   | 26,450  | 25,286  | -0.19%  |      |        | 28,746  |         |      |
| BHN | 83,500  | 下跌   | 下跌   |         | 88,649  |         |      |        | 100,482 |         |      |
| BID | 32,200  | 上漲   | 上漲   | 32,450  | 29,969  | -0.77%  |      | 33,400 | 29,888  | -3.59%  |      |
| BMP | 56,100  | 下跌   | 下跌   |         | 60,173  |         |      |        | 66,368  |         |      |
| BSR | 16,000  | 下跌   | 下跌   |         | 17,130  |         |      |        | 20,093  |         |      |
| BVH | 97,600  | 上漲   | 上漲   | 93,500  | 92,098  | 4.39%   |      | 86,000 | 80,816  | 13.49%  |      |
| BWE | 20,600  | 上漲   | 上漲   | 20,900  | 20,073  | -1.44%  |      | 20,000 | 17,310  | 3.00%   |      |
| CEO | 13,100  | 下跌   | 下跌   |         | 13,509  |         |      |        | 14,906  |         |      |
| CHP | 21,500  | 下跌   | 下跌   |         | 21,985  |         |      | 23,500 | 22,031  | -6.25%  | 賣    |
| CSM | 15,100  | 下跌   | 上漲   |         | 15,662  |         |      | 14,390 | 13,911  | 4.93%   |      |
| CTD | 147,700 | 上漲   | 下跌   | 151,500 | 144,897 | -2.51%  |      |        | 166,806 |         |      |
| CTG | 22,450  | 下跌   | 下跌   |         | 23,788  |         |      |        | 27,228  |         |      |
| CTI | 25,200  | 上漲   | 下跌   | 26,250  | 24,522  | -4.00%  |      |        | 28,747  |         |      |
| CVT | 22,100  | 下跌   | 下跌   |         | 23,985  |         |      |        | 27,705  |         |      |
| DCM | 9,550   | 下跌   | 下跌   |         | 9,999   |         |      |        | 10,949  |         |      |
| DGW | 24,300  | 下跌   | 上漲   |         | 24,980  |         |      | 27,500 | 23,622  | -11.64% |      |
| DHA | 29,200  | 下跌   | 上漲   |         | 29,840  |         |      | 29,100 | 26,141  | 0.34%   |      |
| DHC | 40,300  | 下跌   | 上漲   |         | 42,726  |         |      | 44,600 | 37,266  | -9.64%  |      |
| DHG | 84,700  | 下跌   | 下跌   |         | 86,256  |         |      |        | 94,372  |         |      |
| DPG | 44,800  | 下跌   | 上漲   |         | 46,098  |         |      | 52,000 | 42,364  | -13.85% |      |
| DPM | 18,450  | 上漲   | 上漲   | 18,800  | 17,857  | -1.86%  |      | 19,400 | 17,356  | -4.90%  |      |
| DPR | 33,250  | 下跌   | 下跌   |         | 34,303  |         |      |        | 35,937  |         |      |
| DQC | 27,750  | 下跌   | 上漲   |         | 30,079  |         |      | 31,000 | 26,186  | -10.48% |      |
| DRC | 21,400  | 下跌   | 下跌   | 22,850  | 21,459  | -6.09%  | 賣    |        | 24,952  |         |      |
| DXG | 24,650  | 上漲   | 下跌   | 26,150  | 23,879  | -5.74%  |      | 29,800 | 25,055  | -15.92% | 賣    |
| ELC | 7,880   | 下跌   | 下跌   |         | 8,160   |         |      |        | 9,219   |         |      |
| FCN | 14,950  | 下跌   | 上漲   |         | 15,594  |         |      | 17,700 | 13,229  | -15.54% |      |
| FIT | 3,480   | 上漲   | 下跌   | 3,730   | 3,437   | -6.70%  |      |        | 4,066   |         |      |
| FMC | 30,800  | 上漲   | 上漲   | 28,150  | 28,452  | 9.41%   |      | 24,700 | 24,396  | 24.70%  |      |
| FPT | 41,950  | 上漲   | 下跌   | 42,900  | 40,712  | -2.21%  |      |        | 46,495  |         |      |
| GAS | 96,600  | 下跌   | 下跌   |         | 105,086 |         |      |        | 120,349 |         |      |
| GEX | 25,900  | 上漲   | 下跌   | 26,200  | 24,711  | -1.15%  |      |        | 29,644  |         |      |
| GIL | 36,500  | 下跌   | 上漲   |         | 38,742  |         |      | 34,900 | 34,848  | 4.58%   |      |
| GMD | 28,150  | 上漲   | 上漲   | 26,850  | 26,547  | 4.84%   |      | 27,300 | 23,988  | 3.11%   |      |
| GTN | 10,700  | 上漲   | 下跌   | 10,550  | 10,056  | 1.42%   |      |        | 11,796  |         |      |
| HAG | 5,490   | 上漲   | 下跌   | 5,190   | 5,144   | 5.78%   |      |        | 6,293   |         |      |

We Create Fortune

|     |         |    |    |         |         |        |  |         |         |         |
|-----|---------|----|----|---------|---------|--------|--|---------|---------|---------|
| HAX | 15,700  | 下跌 | 上漲 |         | 16,681  |        |  | 18,500  | 15,549  | -15.14% |
| HBC | 18,600  | 下跌 | 下跌 |         | 21,247  |        |  |         | 25,584  |         |
| HDB | 32,000  | 下跌 | 下跌 |         | 34,700  |        |  |         | 38,749  |         |
| HNG | 16,350  | 上漲 | 上漲 | 15,450  | 14,721  | 5.83%  |  | 8,200   | 14,249  | 99.39%  |
| HPG | 37,550  | 下跌 | 下跌 |         | 39,871  |        |  |         | 42,501  |         |
| HSG | 8,100   | 下跌 | 下跌 |         | 9,413   |        |  |         | 11,932  |         |
| HT1 | 13,100  | 上漲 | 下跌 | 12,950  | 12,045  | 1.16%  |  |         | 14,380  |         |
| HUT | 4,300   | 下跌 | 下跌 |         | 4,995   |        |  |         | 5,531   |         |
| HVN | 32,900  | 下跌 | 下跌 |         | 34,518  |        |  |         | 34,035  |         |
| ITD | 10,750  | 上漲 | 上漲 | 11,200  | 10,397  | -4.02% |  | 12,400  | 10,580  | -13.31% |
| KBC | 12,450  | 下跌 | 上漲 |         | 12,479  |        |  | 13,450  | 11,580  | -7.43%  |
| KDH | 30,700  | 上漲 | 上漲 | 32,200  | 30,251  | -4.66% |  | 33,400  | 30,498  | -8.08%  |
| KSB | 28,850  | 下跌 | 下跌 |         | 29,691  |        |  |         | 33,107  |         |
| LCG | 8,640   | 下跌 | 上漲 |         | 9,103   |        |  | 9,390   | 8,579   | -7.99%  |
| LDG | 15,550  | 上漲 | 下跌 | 15,950  | 14,552  | -2.51% |  |         | 18,940  |         |
| LIX | 49,100  | 上漲 | 上漲 | 41,200  | 47,804  | 19.17% |  | 44,400  | 45,295  | 10.59%  |
| LPB | 9,200   | 下跌 | 下跌 |         | 9,604   |        |  |         | 10,880  |         |
| LSS | 7,100   | 下跌 | 上漲 |         | 7,435   |        |  | 7,890   | 6,353   | -10.01% |
| MPC | 47,100  | 下跌 | 上漲 |         | 49,533  |        |  | 46,700  | 40,579  | 0.86%   |
| MSN | 83,600  | 上漲 | 下跌 | 83,000  | 79,532  | 0.72%  |  |         | 90,176  |         |
| MSR | 20,900  | 上漲 | 上漲 | 22,400  | 20,481  | -6.70% |  | 19,884  | 17,837  | 5.11%   |
| MWG | 110,000 | 下跌 | 下跌 |         | 114,160 |        |  |         | 124,859 |         |
| NKG | 8,400   | 下跌 | 下跌 |         | 9,871   |        |  |         | 13,184  |         |
| NLG | 28,300  | 下跌 | 下跌 |         | 29,312  |        |  | 32,400  | 28,354  | -12.49% |
| NT2 | 25,700  | 上漲 | 下跌 | 24,900  | 24,262  | 3.21%  |  |         | 26,612  |         |
| NTL | 12,600  | 上漲 | 上漲 | 10,000  | 11,701  | 26.00% |  | 10,450  | 9,536   | 20.57%  |
| NTP | 42,000  | 下跌 | 下跌 |         | 44,587  |        |  |         | 51,331  |         |
| PAC | 43,500  | 下跌 | 上漲 |         | 45,853  |        |  | 44,100  | 40,605  | -1.36%  |
| PC1 | 22,500  | 下跌 | 下跌 |         | 24,567  |        |  |         | 26,851  |         |
| PDR | 26,500  | 下跌 | 下跌 |         | 27,038  |        |  |         | 28,768  |         |
| PGC | 14,200  | 下跌 | 下跌 |         | 14,882  |        |  |         | 15,410  |         |
| PHR | 28,600  | 上漲 | 上漲 | 29,300  | 27,386  | -2.39% |  | 24,000  | 24,485  | 19.17%  |
| PLX | 57,800  | 上漲 | 下跌 | 60,100  | 56,695  | -3.83% |  |         | 68,540  |         |
| PNJ | 95,000  | 上漲 | 上漲 | 98,500  | 91,639  | -3.55% |  | 103,900 | 91,800  | -8.57%  |
| POW | 13,900  | 下跌 | 下跌 |         | 14,559  |        |  |         | 14,039  |         |
| PPC | 18,200  | 上漲 | 下跌 | 18,100  | 17,624  | 0.55%  |  |         | 19,639  |         |
| PTB | 60,400  | 下跌 | 上漲 |         | 63,633  |        |  | 64,000  | 56,808  | -5.63%  |
| PVD | 16,300  | 下跌 | 下跌 |         | 17,449  |        |  |         | 20,180  |         |
| PVI | 31,800  | 下跌 | 上漲 |         | 33,130  |        |  | 33,000  | 30,008  | -3.64%  |
| PVS | 18,900  | 上漲 | 下跌 | 19,000  | 17,318  | -0.53% |  |         | 22,123  |         |
| PXS | 5,250   | 上漲 | 下跌 | 5,450   | 4,883   | -3.67% |  |         | 6,559   |         |
| RAL | 86,800  | 下跌 | 上漲 |         | 94,604  |        |  | 103,600 | 86,744  | -16.22% |
| REE | 31,150  | 下跌 | 下跌 |         | 32,648  |        |  |         | 35,477  |         |
| SAB | 233,000 | 上漲 | 上漲 | 208,000 | 218,484 | 12.02% |  |         | 231,449 |         |
| SAM | 7,360   | 下跌 | 上漲 |         | 7,659   |        |  | 7,750   | 7,064   | -5.03%  |
| SBV | 17,000  | 下跌 | 下跌 |         | 18,313  |        |  |         | 26,952  |         |

We Create Fortune

|     |         |    |     |         |         |        |   |         |         |         |
|-----|---------|----|-----|---------|---------|--------|---|---------|---------|---------|
| SCR | 7,920   | 下跌 | 下跌  |         | 8,195   |        |   | 9,160   |         |         |
| SHI | 6,470   | 上漲 | 上漲  | 6,790   | 6,274   | -4.71% |   | 6,990   | 5,879   | -7.44%  |
| SJS | 14,900  | 下跌 | 下跌  |         | 16,014  |        |   |         | 18,261  |         |
| SKG | 16,300  | 下跌 | 下跌  |         | 17,550  |        |   |         | 20,440  |         |
| SSI | 28,300  | 下跌 | 下跌  |         | 29,108  |        |   |         | 32,892  |         |
| STB | 12,200  | 下跌 | 下跌  |         | 13,035  |        |   | 13,500  | 12,210  | -9.56%  |
| SVC | 44,900  | 下跌 | 下跌  |         | 46,560  |        |   |         | 47,578  |         |
| TCB | 26,300  | 下跌 | 下跌  |         | 27,640  |        |   |         | N/A     |         |
| TCM | 25,500  | 上漲 | 下跌  | 25,600  | 22,964  | -0.39% |   |         | 29,332  |         |
| TDH | 10,150  | 下跌 | 下跌  |         | 10,658  |        |   |         | 12,076  |         |
| TLH | 5,910   | 下跌 | 下跌  |         | 6,364   |        |   |         | 7,367   |         |
| TMT | 10,000  | 下跌 | 上漲  |         | 10,782  |        |   | 9,290   | 8,746   | 7.64%   |
| TNG | 18,100  | 上漲 | 上漲  | 17,000  | 16,316  | 6.47%  |   | 12,000  | 14,388  | 50.83%  |
| TYA | 10,450  | 上漲 | 下跌  | 10,700  | 10,250  | -2.34% |   |         | 11,664  |         |
| VCB | 54,600  | 上漲 | 下跌  | 56,500  | 53,339  | -3.36% |   |         | 62,817  |         |
| VFG | 38,300  | 上漲 | 上漲  | 36,800  | 36,414  | 4.08%  |   | 34,394  | 33,451  | 11.36%  |
| VGC | 16,000  | 上漲 | 下跌  | 16,300  | 15,095  | -1.84% |   |         | 18,603  |         |
| VHC | 104,000 | 上漲 | 上漲  | 103,000 | 93,813  | 0.97%  |   | 69,300  | 82,762  | 50.07%  |
| VHM | 76,000  | 上漲 | 下跌  | 69,000  | 69,663  | 10.14% |   |         | 79,422  |         |
| VIB | 27,400  | 上漲 | 下跌  | 27,600  | 25,784  | -0.72% |   |         | 30,672  |         |
| VIC | 95,900  | 上漲 | 上漲  | 98,600  | 93,809  | -2.74% |   | 111,500 | 92,438  | -13.99% |
| VIP | 6,840   | 下跌 | 下跌  |         | 7,048   |        |   |         | 7,294   |         |
| VJC | 129,200 | 下跌 | 下跌  | 133,700 | 129,376 | -3.23% | 賣 |         | 146,795 |         |
| VNM | 117,000 | 下跌 | 下跌  |         | 120,080 |        |   |         | 130,861 |         |
| VPB | 20,450  | 下跌 | 下跌  |         | 21,962  |        |   |         | 25,447  |         |
| VPI | 43,100  | 上漲 | N/A | 41,750  | 42,590  | 3.23%  |   |         | N/A     |         |
| VRC | 22,900  | 上漲 | 上漲  | 23,500  | 22,117  | -2.55% |   | 19,350  | 20,785  | 18.35%  |
| VRE | 30,900  | 上漲 | 下跌  | 30,700  | 28,983  | 0.65%  |   |         | 34,506  |         |
| VSC | 40,200  | 下跌 | 下跌  |         | 40,926  |        |   |         | 45,645  |         |
| VSH | 17,000  | 下跌 | 上漲  |         | 17,282  |        |   | 17,400  | 16,642  | -2.30%  |



We Create Fortune

胡志明市證券交易所 (HSX)

|          | 收盤     | 漲跌%    |
|----------|--------|--------|
| VNI      | 918.12 | 0.42%  |
| VN30     | 888.20 | 0.29%  |
| VN Mid   | 950.87 | -0.08% |
| VN Small | 807.90 | 0.01%  |

| 外資交易 | 成交值<br>(十億盾) |  |
|------|--------------|--|
| 買    | 299.29       |  |
| 賣    | 523.83       |  |
| 買賣超  | (224.54)     |  |

上漲前五名：

| 股票代碼* | 上漲 (VND) | 漲跌%   |
|-------|----------|-------|
| ANV   | 1950     | 6.99% |
| ACL   | 2400     | 6.96% |
| HCM   | 2500     | 4.63% |
| NVT   | 300      | 4.62% |
| HDG   | 1350     | 4.34% |

下跌前五名：

| 股票代碼* | 下跌 (VND) | 漲跌%    |
|-------|----------|--------|
| FLC   | -190     | -3.28% |
| NKG   | -250     | -2.89% |
| HPX   | -750     | -2.74% |
| TNI   | -250     | -2.59% |
| TVB   | -800     | -2.56% |

市值前五大：

| 股票代碼* | 市值<br>(十億盾) |  |
|-------|-------------|--|
| VIC   | 306,396     |  |
| VHM   | 257,913     |  |
| GAS   | 229,483     |  |
| VNM   | 223,773     |  |
| VCB   | 215,506     |  |

交易量前五名：

| 股票代碼 | 成交值  | 漲跌%    |
|------|------|--------|
| VPB  | 5.88 | 0.49%  |
| FLC  | 5.55 | -3.28% |
| STB  | 4.62 | -1.21% |
| NVT  | 4.49 | 4.62%  |
| ASM  | 4.05 | -1.39% |

\* 備註：市值 > 5.000 億盾，成交值 > 15 億盾

源自: Bloomberg & Yuanta Research

河內證券交易所 (HSX)

|           | 收盤     | 漲跌%   |
|-----------|--------|-------|
| HNI       | 103.37 | 0.35% |
| HN30      | 186.28 | 0.82% |
| VNX AllSh | 846.01 | 0.19% |

| 外資交易 | 成交值<br>(十億盾) |  |
|------|--------------|--|
| 買    | 46.98        |  |
| 賣    | 16.69        |  |
| 買賣超  | 30.29        |  |

| 股票代碼* | 上漲 (VND) | 漲跌%   |
|-------|----------|-------|
| PVS   | 1100     | 6.18% |
| TNG   | 700      | 4.02% |
| CEO   | 500      | 3.97% |
| DP3   | 3200     | 3.95% |
| AMV   | 800      | 2.27% |

| 股票代碼* | 下跌 (VND) | 漲跌%    |
|-------|----------|--------|
| HUT   | -100     | -2.27% |
| TV2   | -700     | -0.65% |
| VCS   | -200     | -0.27% |

| 股票代碼* | 市值<br>(十億盾) |  |
|-------|-------------|--|
| ACB   | 39,909      |  |
| VCS   | 13,248      |  |
| SHB   | 9,986       |  |
| PVS   | 9,336       |  |
| VCG   | 8,083       |  |

| 股票代碼 | 成交值  | 漲跌%    |
|------|------|--------|
| PVS  | 5.82 | 6.18%  |
| SHB  | 3.02 | 0.00%  |
| NVB  | 2.54 | 0.00%  |
| ACB  | 1.84 | 0.00%  |
| HUT  | 1.52 | -2.27% |

源自: Bloomberg & Yuanta Research

UPCoM 證券交易所 (UPCoM)

|       | 收盤    | 漲跌%   |
|-------|-------|-------|
| UPCoM | 51.66 | 0.14% |

| 外資交易 | 成交值<br>(十億盾) |  |
|------|--------------|--|
| 買    | 20.91        |  |
| 賣    | 3.56         |  |
| 買賣超  | 17.35        |  |

| 股票代碼* | 上漲 (VND) | 漲跌%   |
|-------|----------|-------|
| VCP   | 1600     | 5.05% |
| NTC   | 2800     | 3.86% |
| ACV   | 2700     | 3.38% |
| MCH   | 2000     | 2.33% |
| BSR   | 200      | 1.27% |

| 股票代碼* | 下跌 (VND) | 漲跌%    |
|-------|----------|--------|
| GEG   | -600     | -4.14% |
| HVN   | -800     | -2.37% |
| MPC   | -600     | -1.26% |
| OIL   | -100     | -0.72% |
| POW   | -100     | -0.71% |

| 股票代碼* | 市值<br>(十億盾) |  |
|-------|-------------|--|
| ACV   | 175,855     |  |
| MCH   | 52,454      |  |
| BSR   | 52,305      |  |
| HVN   | 50,544      |  |
| VGI   | 49,415      |  |

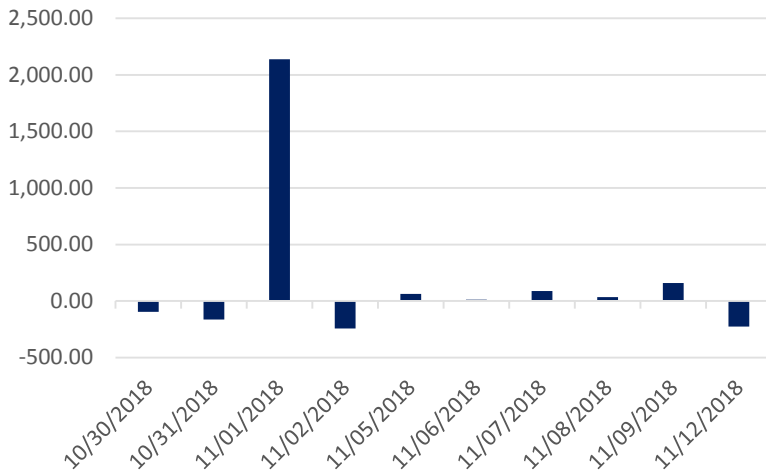
| 股票代碼 | 成交值  | 漲跌%   |
|------|------|-------|
| IDC  | 1.75 | 0.00% |
| BSR  | 1.51 | 1.27% |
| LAW  | 1.51 |       |
| VCP  | 0.80 | 5.05% |
| LPB  | 0.56 | 0.00% |

源自: Bloomberg & Yuanta Research



We Create Fortune

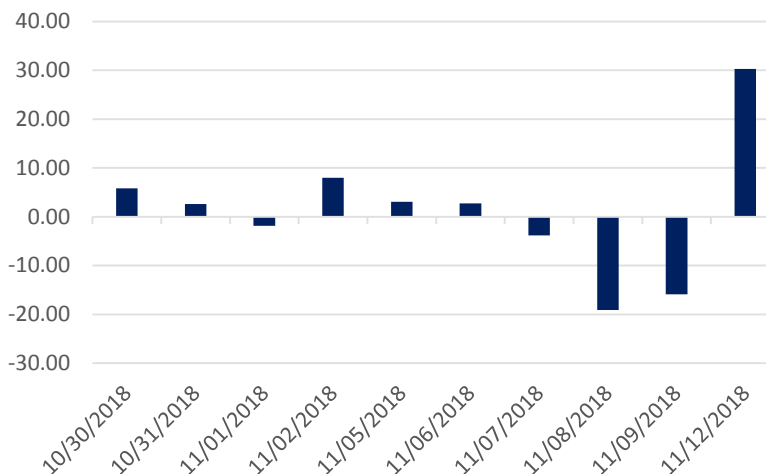
### HSX 外資每日買/賣超 (bil. VND)



| 證券代碼           | 買超金額 (百萬盾) | 證券代碼       | 賣超金額 (百萬盾) |
|----------------|------------|------------|------------|
| <b>SBT</b>     | 13,282     | <b>VIC</b> | (226,996)  |
| <b>GMD</b>     | 12,769     | <b>HPG</b> | (18,240)   |
| <b>E1VFN30</b> | 10,970     | <b>PVD</b> | (15,259)   |
| <b>SSI</b>     | 7,938      | <b>GAS</b> | (11,383)   |
| <b>VCB</b>     | 6,438      | <b>VJC</b> | (8,018)    |

HSX 外資買/賣的 TOP 5 股票

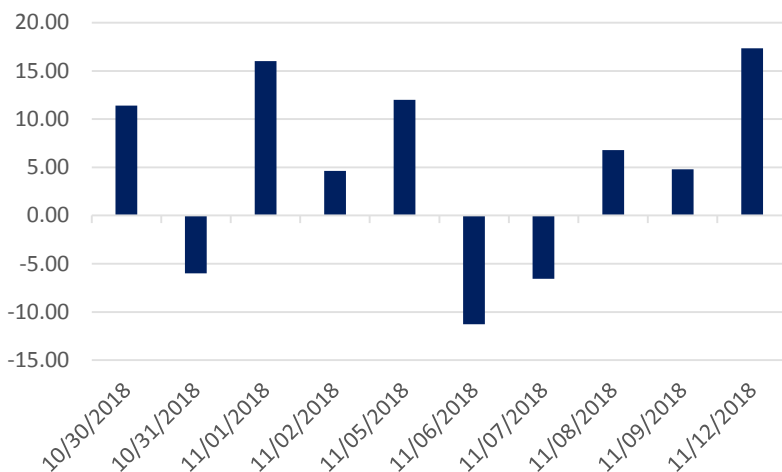
### HNX 外資每日買/賣超 (bil. VND)



| 證券代碼       | 買超金額 (百萬盾) | 證券代碼       | 賣超金額 (百萬盾) |
|------------|------------|------------|------------|
| <b>PVS</b> | 20,612     | <b>PVB</b> | (619)      |
| <b>CEO</b> | 7,332      | <b>DP3</b> | (164)      |
| <b>SRA</b> | 851        | <b>VCS</b> | (146)      |
| <b>VIX</b> | 588        | <b>HJS</b> | (24)       |
| <b>AMV</b> | 523        | <b>KSD</b> | (24)       |

HNX 外資買/賣的 TOP 5 股票

### Upcom 外資每日買/賣超 (bil. VND)



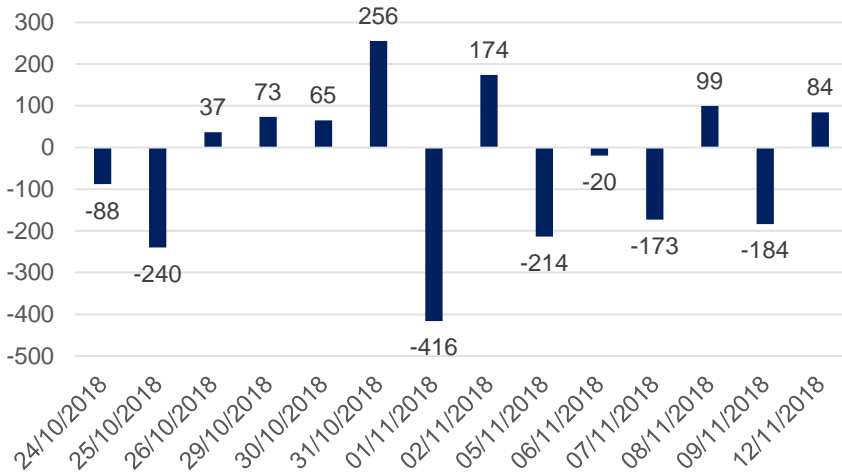
| 證券代碼       | 買超金額 (百萬盾) | 證券代碼       | 賣超金額 (百萬盾) |
|------------|------------|------------|------------|
| <b>BSR</b> | 4,690      | <b>CTR</b> | (854)      |
| <b>NTC</b> | 2,633      | <b>HVN</b> | (605)      |
| <b>ACV</b> | 2,625      | <b>QNS</b> | (284)      |
| <b>VEA</b> | 2,324      | <b>MPC</b> | (162)      |
| <b>MCH</b> | 2,125      | <b>MSR</b> | (19)       |

UPCoM 外資買/賣的 TOP 5 股票

We Create Fortune

## 自營交易統計

自營商交易每日買/賣超 (bil. VND)

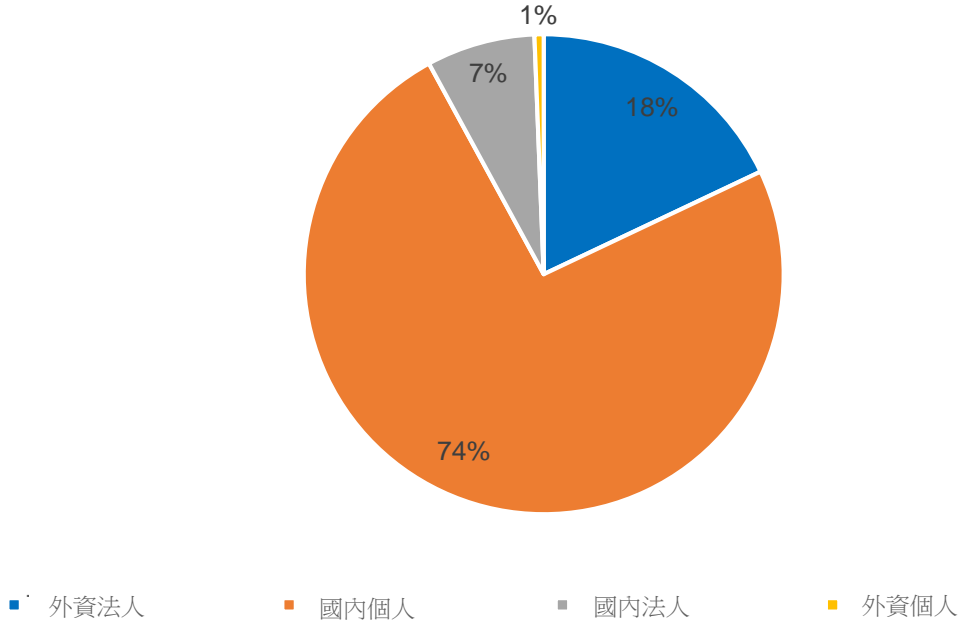


| 證券代碼 | 買進金額 (百萬盾) | 證券代碼    | 賣出金額 (百萬盾) |
|------|------------|---------|------------|
| HPG  | 9,689      | E1VFN30 | 14,963     |
| VIC  | 5,063      | HBC     | 11,229     |
| MBB  | 4,933      | VIC     | 7,865      |
| MSN  | 2,509      | VPB     | 6,420      |
| VNM  | 2,409      | GTN     | 4,994      |

自營商交易 Top 5 個股

## 越南證券市場投資人占比

HSX 投資人占比

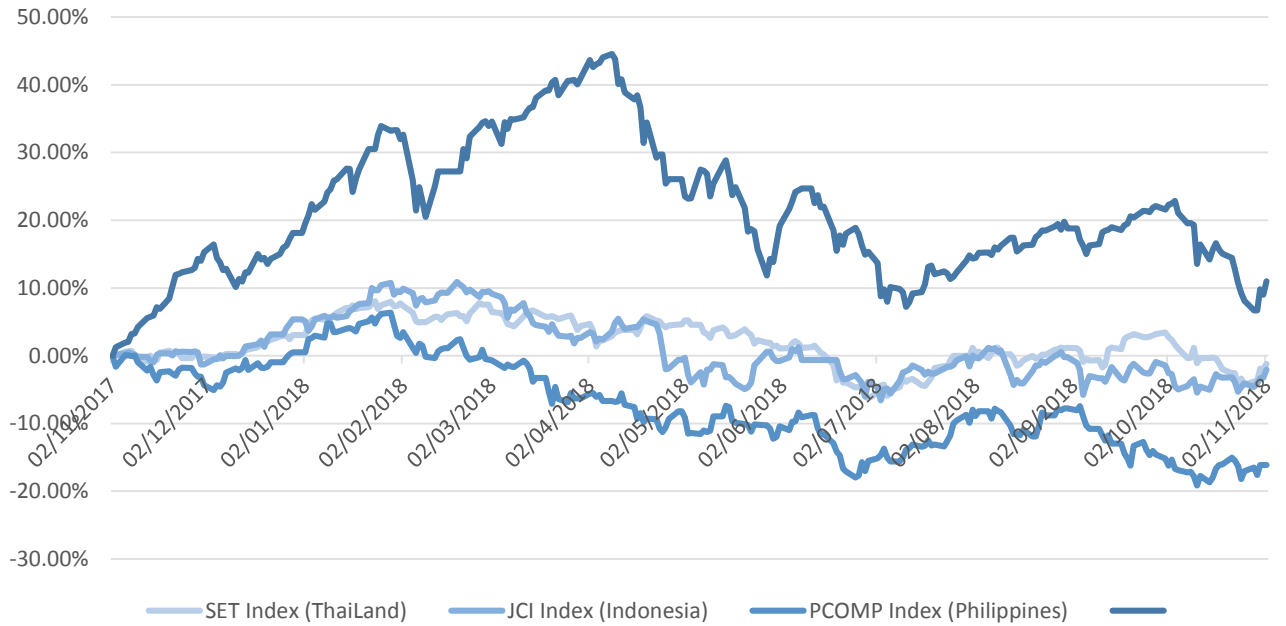


源自: FiinPro – Yuanta Retail Research



We Create Fortune

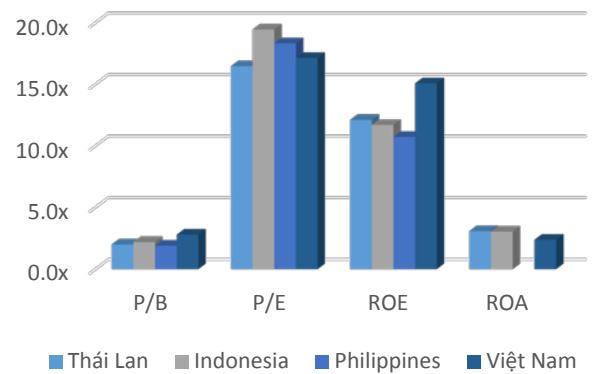
## 東南亞主要市場走勢比較



### 東南亞主要市場數據

|       |          | 泰國     | 印尼     | 菲律賓   | 越南     |
|-------|----------|--------|--------|-------|--------|
| P/B   |          | 2.0x   | 2.2x   | 1.9x  | 2.8x   |
| P/E   |          | 16.5x  | 19.5x  | 18.3x | 17.1x  |
| ROE   | %        | 12.11  | 11.70  | 10.72 | 15.08  |
| ROA   | %        | 3.08   | 3.04   | 2.36  | 2.38   |
| 市值    | bil. USD | 519.50 | 431.00 | 164   | 137.00 |
| 成交金額  | mil. USD | 1.40   | 0.28   | 0.05  | 0.15   |
| 股息殖利率 | %        | 3.16   | 2.33   | 1.65  | 2.11   |

源自: Bloomberg & Yuanta Research





We Create **Fortune**

## YUANTA SECURITIES VIETNAM JOINT STOCK COMPANY

### 個人客戶分析部門

**Nguyen The Minh**

研究分析經理

+84 28 3622 6868 ext 3826

minh.nguyen@yuanta.com

**Quach Duc Khanh**

高級分析專員

+84 28 3622 6868 ext 3833

khanh.quach@yuanta.com

**Nguyen Trinh Ngoc Hong**

分析專員

+84 28 3622 6868 ext 3832

hong.nguyen@yuanta.com

### 個人客戶經紀部門

**Nguyen Thanh Tung**

總公司經紀部經理

+84 28 3622 6868 ext 3609

tung.nguyen@yuanta.com.vn

**Chung Kim Hoa 鍾金華**

華人客戶部經理

+84 28 3622 6868 ext 3828

hoa.chung@yuanta.com.vn

**Phu Vinh Que**

Cho Lon 分行經理

+84 28 3622 6868

que.phu@yuanta.com.vn

**Nguyen Viet Quang**

Ha Noi 分行經理

+84 28 3622 6868 ext 3404

quang.nguyen@yuanta.com.vn

**Vo Thi Thu Thuy**

Binh Duong 分行經理

+84 28 3622 6868 ext 3505

thuy.vo@yuanta.com.vn

**Bui Quoc Phong**

Dong Nai 分行經理

+84 28 3622 6868

phong.bui@yuanta.com.vn

**Nguyen Duc Hoan**

南 Ha Noi 業務中心經理

+84 28 3622 6868 ext 3409

hoan.nguyen@yuanta.com.vn



We Create **Fortune**

## Appendix A: Important Disclosures

### Analyst Certification

Each research analyst primarily responsible for the content of this research report, in whole or in part, certifies that with respect to each security or issuer that the analyst covered in this report: (1) all of the views expressed accurately reflect his or her personal views about those securities or issuers; and (2) no part of his or her compensation was, is, or will be, directly or indirectly, related to the specific recommendations or views expressed by that research analyst in the research report.

### Ratings Definitions

**BUY:** We have a positive outlook on the stock based on our expected absolute or relative return over the investment period. Our thesis is based on our analysis of the company's outlook, financial performance, catalysts, valuation and risk profile. We recommend investors add to their position.

**HOLD-Outperform:** In our view, the stock's fundamentals are relatively more attractive than peers at the current price. Our thesis is based on our analysis of the company's outlook, financial performance, catalysts, valuation and risk profile.

**HOLD-Underperform:** In our view, the stock's fundamentals are relatively less attractive than peers at the current price. Our thesis is based on our analysis of the company's outlook, financial performance, catalysts, valuation and risk profile.

**SELL:** We have a negative outlook on the stock based on our expected absolute or relative return over the investment period. Our thesis is based on our analysis of the company's outlook, financial performance, catalysts, valuation and risk profile. We recommend investors reduce their position.

**Under Review:** We actively follow the company, although our estimates, rating and target price are under review.

**Restricted:** The rating and target price have been suspended temporarily to comply with applicable regulations and/or Yuanta policies.

Note: Yuanta research coverage with a Target Price is based on an investment period of 12 months. Greater China Discovery Series coverage does not have a formal 12 month Target Price and the recommendation is based on an investment period specified by the analyst in the report.

### Global Disclaimer

© 2018 Yuanta. All rights reserved. The information in this report has been compiled from sources we believe to be reliable, but we do not hold ourselves responsible for its completeness or accuracy. It is not an offer to sell or solicitation of an offer to buy any securities. All opinions and estimates included in this report constitute our judgment as of this date and are subject to change without notice.

This report provides general information only. Neither the information nor any opinion expressed herein constitutes an offer or invitation to make an offer to buy or sell securities or other investments. This material is prepared for general circulation to clients and is not intended to provide tailored investment advice and does not take into account the individual financial situation and objectives of any specific person who may receive this report. Investors should seek financial advice regarding the appropriateness of investing in any securities, investments or investment strategies discussed or recommended in this report. The information contained in this report has been compiled from sources believed to be reliable but no representation or warranty, express or implied, is made as to its accuracy, completeness or correctness. This report is not (and should not be construed as) a solicitation to act as securities broker or dealer in any jurisdiction by any person or company that is not legally permitted to carry on such business in that jurisdiction.

Yuanta research is distributed in the United States only to Major U.S. Institutional Investors (as defined in Rule 15a-6 under the Securities Exchange Act of 1934, as amended and SEC staff interpretations thereof). All transactions by a US person in the securities mentioned in this report must be effected through a registered broker-dealer under Section 15 of the Securities Exchange Act of 1934, as amended. Yuanta research is distributed in Taiwan by Yuanta Securities Investment Consulting. Yuanta research is distributed in Hong Kong by Yuanta Securities (Hong Kong) Co. Limited, which is licensed in Hong Kong by the Securities and Futures Commission for regulated activities, including Type 4 regulated activity (advising on securities). In Hong Kong, this research report may not be redistributed, retransmitted or disclosed, in whole or in part or any form or manner, without the express written