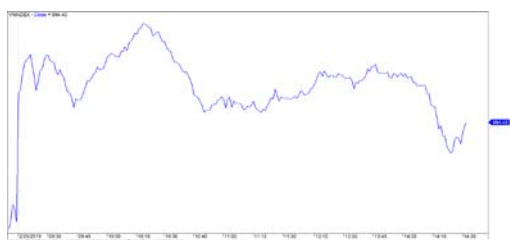


市場走勢 2019/02/25

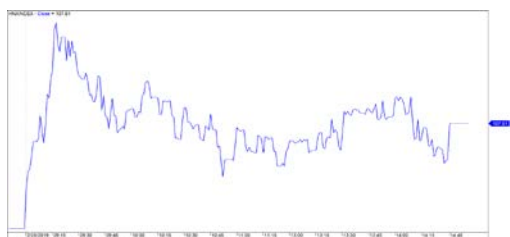
| 市場指數 | VNI | HNI | UPCOM |
|-----------------|----------|---------|--------|
| 收盤 | 994.43 | 107.61 | 55.59 |
| %日 | 0.56% | 0.74% | 0.07% |
| %週 | 3.45% | 0.72% | 0.60% |
| %月 | 9.41% | 4.74% | 3.48% |
| %年 | -9.83% | -14.76% | -6.67% |
| 成交值(十億盾) | | | |
| 當日 | 4,999 | 516 | 319 |
| 日均量/週 | 4,566 | 493 | 428 |
| 日均量/月 | 3,702 | 398 | 334 |
| 外資進出 | | | |
| 買進 | 1,076.65 | 52.04 | 55.09 |
| 賣出 | 949.96 | 22.02 | 51.89 |
| 買賣超 | 126.69 | 30.02 | 3.20 |
| 市場漲跌家數 | | | |
| 上漲 | 180 | 77 | 154 |
| 下跌 | 122 | 71 | 94 |
| 持平 | 81 | 235 | 607 |
| 市場指標 | | | |
| P/E | 16.90 | 9.77 | 17.05 |
| 總市值 (兆盾) | 3,244 | 199 | 975 |
| 股息殖利率 | 2.47% | 4.01% | 4.73% |

資料源: Bloomberg – YSVN

VNINDEX



HNIINDEX



市場走勢

當有關貿易戰的壓力正有所降低的信息披露時，美國總統決定於 2019 年 3 月 1 日征稅協定延後，以便兩國可提出更適合的協議。這對亞洲區各市場產生了積極影響，隨著所有指數盤中均有相當好的增長。尤其是中國市場的上海和深圳兩大股指，其突變增長 5.6%。

越南市場與一般市場也有同步交易，VN-Index 漲 0.56%，收報 994.4 點。當總成交額接近 5 兆越盾時，盤中流動性大幅增長。對於河內，HNX 指數的漲幅也相當好，收報 107.6 點 (+ 0.74%)；Upcom 指數大多時段成交在平盤位之下，但收盤時上漲 0.07%，收報 55.6 點。

Vingroup 房地產股經前幾盤成為主要指數的支撐後，卻遭受停利壓力，導致 VIC (-0.6%)，VHM (-1.2%)，VRE (-3.1%) 小幅下跌。然而，帶有市場性質的金融、房地產、建築等行業板塊股卻有很好的增長。HNX 指數獲 ACB，VCS，PVS，VGC，PVI 等大型股的主要支撐。

外資繼續成為市場上的買家，值達 1600 億越盾。主要集中到 HSX 上的個股，如：MSN，VCB，HPG，SSI，PVS。然而，仍有多支股票盤中遭拋售，如：VRE，VJC，VHM，DHG，GEG。

市場評論

我們預計今天市場可能會出現盤整，VN-Index 可能會回到 972 - 991 點價位區。同時，投資人心態也不如前幾盤悲觀，但心理上仍未完全明確，且短期風險略有增高。另，股票比例略有增高，但這一比例仍處於 70-80% 的風險區，因此，市場在未來幾盤可能會逐步出現分歧。

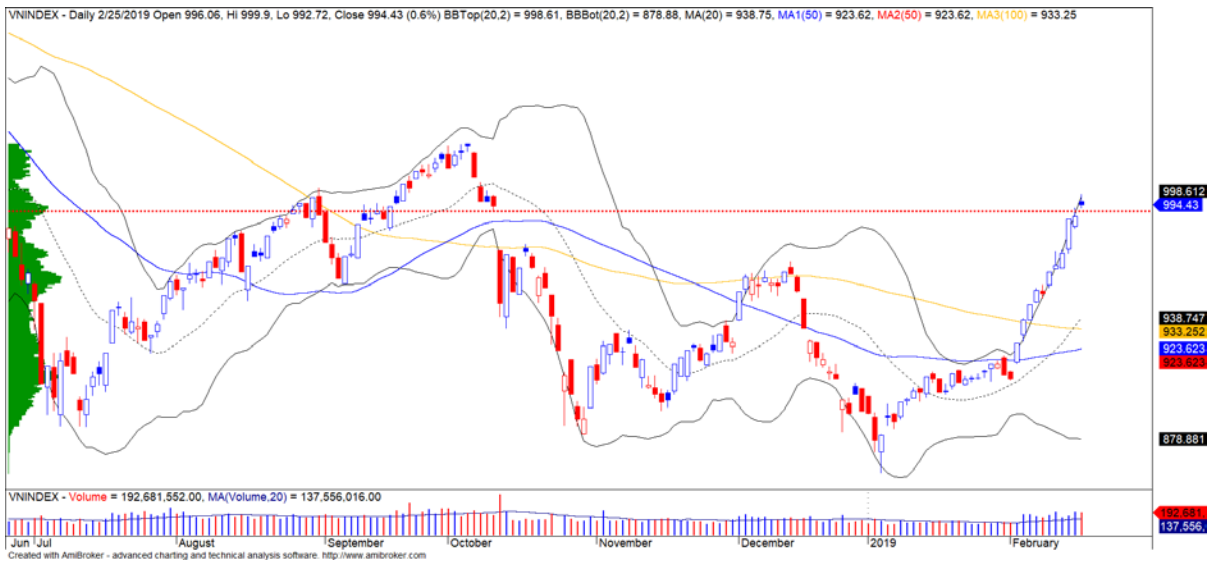
我們的趨勢指標系統仍維持兩大股指短期趨勢上漲，停損位於 VN-Index 的 968.45 點和 HNX 指數的 104.08 點。因此，我們建議短線投資人可重組投資組合，並關注每支股票的走勢。

建議短期投資比重：70% 股票 / 30% 現金

(股票趨勢追蹤圖在下一頁內更新)

We Create Fortune

技術分析圖



指數技術分析圖 VN-Index



指數技術分析圖 HNX-Index

| 指數 | 短期趨勢 | 中期趨勢 | 阻力區 1 | 阻力區 2 | 支撐區 1 | 支撐區 2 |
|-------------|------|------|-------|-------|-------|-------|
| VN-Index | 上漲 | 上漲 | 972 | 1,025 | 897 | 780 |
| HNX-Index | 上漲 | 下跌 | 110 | 117 | 100 | 96 |
| VN30 | 上漲 | 上漲 | 946 | 995 | 865 | 768 |
| VNMidcaps | 上漲 | 上漲 | 1,020 | 1,079 | 925 | 971 |
| VNSmallcaps | 上漲 | 下跌 | 815 | 835 | 789 | 769 |



We Create Fortune

股票趨勢追蹤表

| 股票 | 價格 | 短期趨勢 | 中期趨勢 | 短期買進進價 | 短期止損 | 暫計短期利潤% | 短期訊號 | 中期買進進價 | 中期止損 | 暫計中期獲利% | 中期訊號 |
|-----|---------|------|------|--------|---------|---------|------|--------|---------|---------|------|
| AAA | 15,200 | 上漲 | 下跌 | 15,400 | 14,868 | -1.30% | | | 16,605 | | |
| ACB | 31,000 | 上漲 | 下跌 | 30,200 | 29,123 | 2.65% | | | 33,291 | | |
| ACV | 90,700 | 上漲 | 上漲 | 88,300 | 86,182 | 2.72% | | 90,000 | 76,780 | 0.78% | |
| ANV | 28,400 | 上漲 | 下跌 | 27,200 | 27,471 | 4.41% | | | 31,024 | | |
| ASM | 8,220 | 下跌 | 下跌 | | 8,614 | | | | 9,351 | | |
| BFC | 21,450 | 下跌 | 下跌 | | 22,918 | | | | 25,187 | | |
| BID | 34,000 | 上漲 | 上漲 | 33,150 | 32,666 | 2.56% | | 33,400 | 29,888 | 1.80% | |
| BMP | 48,400 | 上漲 | 下跌 | 50,800 | 48,075 | -4.72% | | | 54,542 | | |
| BSR | 14,200 | 上漲 | 下跌 | 13,100 | 13,581 | 8.40% | | | 15,250 | | |
| BVH | 94,900 | 上漲 | 上漲 | 94,400 | 92,411 | 0.53% | | 86,000 | 88,082 | 10.35% | |
| BWE | 24,400 | 下跌 | 上漲 | | 25,537 | | | 20,000 | 22,133 | 22.00% | |
| CEO | 13,400 | 上漲 | 下跌 | 13,500 | 13,076 | -0.74% | | | 14,755 | | |
| CHP | 23,000 | 上漲 | 上漲 | 21,450 | 22,318 | 7.23% | | 23,000 | 20,585 | 0.00% | |
| CII | 23,650 | 下跌 | 下跌 | | 24,059 | | | | 26,172 | | |
| CMX | 16,200 | 上漲 | 上漲 | 15,150 | 15,640 | 6.93% | | 5,910 | 13,022 | 174.11% | |
| CSM | 14,650 | 下跌 | 上漲 | | 15,312 | | | 14,390 | 13,911 | 1.80% | |
| CTD | 136,000 | 下跌 | 下跌 | | 139,941 | | | | 152,745 | | |
| CTG | 21,300 | 上漲 | 下跌 | 19,550 | 19,817 | 8.95% | | | 22,209 | | |
| CTI | 25,000 | 下跌 | 上漲 | | 25,837 | | | 26,850 | 23,186 | -6.89% | |
| CVT | 22,850 | 上漲 | 上漲 | 19,900 | 21,783 | 14.82% | | 22,550 | 18,860 | 1.33% | |
| DCM | 9,100 | 上漲 | 下跌 | 9,200 | 8,877 | -1.09% | | | 9,978 | | |
| DGC | 43,000 | 上漲 | 下跌 | 44,000 | 41,659 | -2.27% | | | 47,020 | | |
| DGW | 24,250 | 上漲 | 下跌 | 23,300 | 23,113 | 4.08% | | | 25,127 | | |
| DHA | 33,900 | 上漲 | 上漲 | 32,250 | 31,350 | 5.12% | | 29,100 | 28,741 | 16.49% | |
| DHC | 33,300 | 上漲 | 下跌 | 32,700 | 31,837 | 1.83% | | | 34,601 | | |
| DHG | 109,100 | 上漲 | 上漲 | 77,500 | 93,308 | 40.77% | | 93,000 | 78,754 | 17.31% | |
| DIG | 16,250 | 上漲 | 下跌 | 16,000 | 16,126 | 1.56% | | | 17,064 | | |
| DPG | 47,600 | 上漲 | 下跌 | | 47,361 | | | | 52,441 | | |
| DPM | 21,000 | 下跌 | 上漲 | | 22,628 | | | 19,400 | 20,291 | 8.25% | |
| DPR | 40,000 | 上漲 | 上漲 | 32,600 | 37,441 | 22.70% | | 35,950 | 34,151 | 11.27% | |
| DQC | 26,800 | 上漲 | 上漲 | 27,700 | 25,803 | -3.25% | | 31,000 | 26,186 | -13.55% | |
| DRC | 22,300 | 上漲 | 下跌 | | 22,235 | | | | 24,379 | | |
| DXG | 24,750 | 上漲 | 下跌 | 24,700 | 23,916 | 0.20% | | | 26,665 | | |
| EIB | 17,800 | 上漲 | 上漲 | 17,800 | 17,762 | 0.00% | 買進 | 14,700 | 16,280 | 21.09% | |
| FCN | 14,600 | 上漲 | 下跌 | 13,900 | 13,960 | 5.04% | | | 15,658 | | |
| FMC | 29,200 | 下跌 | 上漲 | | 31,660 | | | 24,700 | 27,888 | 18.22% | |
| FPT | 45,500 | 上漲 | 上漲 | 42,800 | 43,404 | 6.31% | | | 45,324 | | |
| GAS | 99,200 | 上漲 | 下跌 | 89,900 | 93,800 | 10.34% | | | 100,384 | | |
| GEX | 23,850 | 上漲 | 下跌 | 22,600 | 22,726 | 5.53% | | | 24,673 | | |
| GIL | 39,500 | 上漲 | 上漲 | 35,950 | 39,178 | 9.87% | | 39,000 | 35,205 | 1.28% | |

We Create **Fortune**

| | | | | | | | | | | | |
|------------|---------|----|----|--------|--------|---------|----|--------|---------|---------|----|
| GMD | 27,500 | 上漲 | 下跌 | 27,500 | 26,636 | 0.00% | | | 29,123 | | |
| GTN | 11,700 | 上漲 | 下跌 | 10,400 | 11,280 | 12.50% | | | 11,796 | | |
| HAG | 5,500 | 上漲 | 下跌 | 5,080 | 5,208 | 8.27% | | | 5,603 | | |
| HAX | 16,800 | 上漲 | 下跌 | 17,200 | 16,310 | -2.33% | | | 17,965 | | |
| HBC | 18,750 | 上漲 | 下跌 | 16,800 | 17,500 | 11.61% | | | 19,374 | | |
| HCM | 29,900 | 上漲 | 上漲 | 46,700 | 26,439 | -35.97% | | 28,000 | 26,547 | 6.79% | 買進 |
| HDB | 31,000 | 上漲 | 下跌 | 31,000 | 30,706 | 0.00% | 買進 | | 33,267 | | |
| HDC | 14,150 | 下跌 | 下跌 | | 14,636 | | | | 14,709 | | |
| HDG | 36,950 | 上漲 | 上漲 | 35,950 | 35,814 | 2.78% | | 37,400 | 32,450 | -1.20% | |
| HNG | 15,850 | 上漲 | 下跌 | 15,100 | 14,658 | 4.97% | | | 16,554 | | |
| HPG | 34,800 | 上漲 | 上漲 | 29,500 | 31,320 | 17.97% | | 33,900 | 32,928 | 2.65% | 買進 |
| HSG | 8,520 | 上漲 | 上漲 | 6,860 | 7,204 | 24.20% | | | 8,479 | | |
| HT1 | 15,500 | 上漲 | 上漲 | 14,150 | 15,167 | 9.54% | | 14,800 | 13,246 | 4.73% | |
| HUT | 3,500 | 下跌 | 下跌 | | 3,753 | | | | 4,342 | | |
| HVN | 38,700 | 下跌 | 上漲 | | 40,638 | | | 39,000 | 34,635 | -0.77% | |
| KBC | 14,600 | 上漲 | 上漲 | 14,250 | 14,175 | 2.46% | | 13,450 | 12,691 | 8.55% | |
| KDH | 31,000 | 上漲 | 上漲 | 31,200 | 30,334 | -0.64% | | 33,000 | 28,018 | -6.06% | |
| KSB | 25,700 | 上漲 | 下跌 | 26,300 | 25,416 | -2.28% | | | 27,640 | | |
| LCG | 9,200 | 上漲 | 上漲 | 8,230 | 8,713 | 11.79% | | 9,200 | 7,868 | 0.00% | |
| LDG | 13,850 | 下跌 | 下跌 | | 15,161 | | | | 16,835 | | |
| LHG | 19,800 | 上漲 | 下跌 | 19,100 | 18,974 | 3.66% | | | 20,947 | | |
| LPB | 9,200 | 上漲 | 下跌 | 9,100 | 8,663 | 1.10% | | | 9,825 | | |
| LSS | 6,100 | 下跌 | 下跌 | | 6,486 | | | 7,890 | 6,353 | -19.48% | 賣出 |
| MBB | 22,450 | 上漲 | 上漲 | 19,750 | 21,716 | 13.67% | | 21,850 | 19,348 | 2.75% | |
| MPC | 46,600 | 上漲 | 上漲 | 41,100 | 45,607 | 13.38% | | 47,500 | 39,770 | -1.89% | |
| MSN | 91,200 | 上漲 | 上漲 | 82,300 | 85,889 | 10.81% | | | 88,530 | | |
| MSR | 19,000 | 上漲 | 下跌 | 18,700 | 18,783 | 1.60% | | | 20,804 | | |
| MWG | 89,600 | 上漲 | 下跌 | 86,200 | 85,795 | 3.94% | | | 92,376 | | |
| NDN | 11,900 | 上漲 | 下跌 | 12,500 | 11,773 | -4.80% | | | 13,356 | | |
| NKG | 7,800 | 上漲 | 下跌 | 6,580 | 7,053 | 18.54% | | | 7,821 | | |
| NLG | 27,200 | 上漲 | 下跌 | 26,100 | 26,163 | 4.21% | | | 28,488 | | |
| NT2 | 29,000 | 下跌 | 上漲 | | 29,933 | | | 25,900 | 26,826 | 11.97% | |
| NTL | 18,000 | 下跌 | 上漲 | 19,200 | 18,084 | -5.81% | 賣出 | 10,450 | 15,978 | 72.25% | |
| OIL | 14,900 | 上漲 | 下跌 | 14,900 | 14,476 | 0.00% | | | 16,188 | | |
| PAC | 36,900 | 下跌 | 下跌 | | 37,535 | | | | 40,410 | | |
| PC1 | 23,050 | 下跌 | 下跌 | | 24,541 | | | | 25,195 | | |
| PDR | 26,800 | 上漲 | 下跌 | 26,150 | 25,744 | 2.49% | | | 27,684 | | |
| PHR | 43,000 | 上漲 | 上漲 | 29,300 | 37,655 | 46.76% | | 24,000 | 31,895 | 79.17% | |
| PLX | 58,600 | 上漲 | 下跌 | 55,700 | 55,835 | 5.21% | | | 60,986 | | |
| PNJ | 100,000 | 上漲 | 下跌 | 94,200 | 95,769 | 6.16% | | | 101,983 | | |
| POW | 16,400 | 下跌 | 上漲 | | 17,156 | | | 16,550 | 14,933 | -0.91% | |
| PPC | 23,100 | 上漲 | 上漲 | 18,550 | 22,368 | 24.53% | | 19,700 | 21,245 | 17.26% | |
| PTB | 62,000 | 上漲 | 上漲 | 60,200 | 58,605 | 2.99% | | 64,000 | 56,808 | -3.13% | |
| PVD | 17,600 | 上漲 | 下跌 | 15,500 | 16,615 | 13.55% | | | 17,923 | | |
| PVI | 33,700 | 上漲 | 上漲 | 32,900 | 32,654 | 2.43% | | 33,000 | 30,008 | 2.12% | |
| PVS | 20,700 | 上漲 | 下跌 | 18,900 | 18,996 | 9.52% | | | 20,919 | | |



We Create Fortune

| | | | | | | | | | | | |
|-----|---------|----|----|---------|---------|--------|----|---------|---------|--------|----|
| PXS | 3,960 | 下跌 | 下跌 | | 4,275 | | | 4,874 | | | |
| QNS | 43,100 | 上漲 | 上漲 | 42,000 | 42,441 | 2.62% | | 41,500 | 3,425 | 3.86% | |
| REE | 35,600 | 上漲 | 上漲 | 31,100 | 34,359 | 14.47% | | 35,100 | 31,219 | 1.42% | |
| SAB | 247,800 | 上漲 | 上漲 | 244,000 | 240,625 | 1.56% | | 245,000 | 227,704 | 1.14% | |
| SAM | 7,400 | 上漲 | 上漲 | 7,090 | 7,245 | 4.37% | | 7,400 | 6,782 | 0.00% | |
| SCR | 7,480 | 下跌 | 下跌 | | 7,714 | | | 8,128 | | | |
| SHI | 8,480 | 上漲 | 上漲 | 6,850 | 8,067 | 23.80% | | 6,990 | 7,111 | 21.32% | |
| SJS | 21,550 | 上漲 | 上漲 | 18,800 | 20,682 | 14.63% | | 18,100 | 18,715 | 19.06% | |
| SKG | 14,900 | 下跌 | 下跌 | | 15,371 | | | 17,466 | | | |
| SSI | 28,600 | 上漲 | 下跌 | 26,900 | 27,050 | 6.32% | | 29,029 | | | |
| STB | 12,900 | 上漲 | 上漲 | 11,700 | 12,527 | 10.26% | | 13,000 | 11,265 | -0.77% | |
| TCB | 27,750 | 上漲 | 下跌 | 25,800 | 26,701 | 7.56% | | N/A | | | |
| TCM | 29,600 | 上漲 | 上漲 | 24,350 | 28,186 | 21.56% | | 28,000 | 24,042 | 5.71% | |
| TDH | 10,650 | 上漲 | 下跌 | 10,300 | 10,318 | 3.40% | | 11,264 | | | |
| TLH | 5,020 | 上漲 | 下跌 | 5,000 | 4,597 | 0.40% | | 5,686 | | | |
| TNG | 18,600 | 上漲 | 上漲 | 18,000 | 18,340 | 3.33% | | 12,000 | 15,302 | 55.00% | |
| VCB | 63,400 | 上漲 | 上漲 | 55,000 | 59,009 | 15.27% | | 62,000 | 59,813 | 2.26% | 買進 |
| VCG | 27,400 | 上漲 | 上漲 | 25,100 | 25,703 | 9.16% | | 19,200 | 19,701 | 42.71% | |
| VFG | 38,000 | 下跌 | 上漲 | | 39,085 | | | 34,394 | 34,815 | 10.49% | |
| VGC | 20,700 | 上漲 | 上漲 | 16,300 | 19,510 | 26.99% | | 19,100 | 17,592 | 8.38% | |
| VGT | 11,500 | 上漲 | 下跌 | 11,600 | 11,433 | -0.86% | | 13,091 | | | |
| VHC | 94,500 | 下跌 | 下跌 | | 97,189 | | | 105,200 | | | |
| VHM | 92,000 | 上漲 | 上漲 | 76,600 | 89,192 | 20.10% | | 80,000 | 71,219 | 15.00% | |
| VIB | 19,000 | 上漲 | 下跌 | 18,000 | 18,407 | 5.56% | | 19,666 | | | |
| VIC | 116,300 | 上漲 | 上漲 | 109,100 | 112,845 | 6.60% | | 112,000 | 95,601 | 3.84% | |
| VIP | 7,400 | 上漲 | 上漲 | 7,000 | 7,032 | 5.71% | | 7,350 | 7,277 | 0.68% | 買進 |
| VJC | 124,500 | 上漲 | 下跌 | 124,500 | 122,619 | 0.00% | 買進 | 130,367 | | | |
| VND | 17,900 | 上漲 | 下跌 | 16,800 | 16,552 | 6.55% | | 18,694 | | | |
| VNG | 21,600 | 上漲 | 上漲 | 18,301 | 21,399 | 18.02% | | 16,008 | 19,906 | 34.94% | |
| VNM | 151,600 | 上漲 | 上漲 | 131,000 | 144,581 | 15.73% | | 140,200 | 125,061 | 8.13% | |
| VPB | 21,500 | 上漲 | 下跌 | 20,200 | 20,441 | 6.44% | | 22,887 | | | |
| VPI | 41,250 | 下跌 | 下跌 | | 41,972 | | | 43,124 | | | |
| VRC | 17,600 | 下跌 | 下跌 | | 18,159 | | | 19,388 | | | |
| VRE | 33,900 | 上漲 | 上漲 | 30,400 | 32,945 | 11.51% | | 35,000 | 32,589 | -3.14% | 買進 |
| VSC | 44,400 | 上漲 | 下跌 | 42,700 | 42,750 | 3.98% | | 45,128 | | | |

We Create Fortune

胡志明市交易所 (HSX)

| | 收盤 | 漲跌% |
|----------|----------|-------|
| VNI | 994.43 | 0.56% |
| VN30 | 939.47 | 1.07% |
| VN Mid | 1,001.63 | 0.95% |
| VN Small | 792.23 | 0.51% |

河內交易所 (HSX)

| | 收盤 | 漲跌% |
|--------------|--------|-------|
| HNI | 107.61 | 0.74% |
| HN30 | 196.29 | 0.76% |
| VNX AllSh | 905.30 | 0.80% |

UPCOM 市場 (UPCoM)

| | 收盤 | 漲跌% |
|-------|-------|-------|
| UPCoM | 55.59 | 0.07% |

| 外資交易 | 成交值(十億盾) | |
|------|----------|--|
| 買進進 | 1,076.65 | |
| 賣出 | 949.96 | |
| 買進賣超 | 126.69 | |

| 外資交易 | 成交值(十億盾) | |
|------|----------|--|
| 買進進 | 52.04 | |
| 賣出 | 22.02 | |
| 買進賣超 | 30.02 | |

| 外資交易 | 成交值(十億盾) | |
|------|----------|--|
| 買進進 | 55.09 | |
| 賣出 | 51.89 | |
| 買進賣超 | 3.20 | |

| 上漲排名/ 股碼 | 漲跌(VND) | 漲跌% |
|-------------|---------|-------|
| DPG | 3100 | 6.97% |
| DHG | 7100 | 6.96% |
| TTF | 200 | 6.92% |
| NVT | 540 | 6.91% |
| HSG | 550 | 6.90% |

| 上漲排名/ 股碼 | 漲跌(VND) | 漲跌% |
|-------------|---------|-------|
| BVS | 400 | 3.42% |
| TV2 | 4200 | 3.28% |
| TVC | 400 | 3.08% |
| PVS | 400 | 1.97% |
| ACB | 500 | 1.64% |

| 上漲排名/ 股碼 | 漲跌(VND) | 漲跌% |
|-------------|---------|-------|
| MIG | 600 | 4.55% |
| NTC | 4000 | 3.85% |
| ACV | 2100 | 2.37% |
| VEF | 1700 | 1.76% |
| BSR | 200 | 1.43% |

| 下跌排名/ 股碼 | 漲跌(VND) | 漲跌% |
|-------------|---------|--------|
| VRE | -1100 | -3.14% |
| NBB | -550 | -2.89% |
| NTL | -500 | -2.70% |
| SJS | -450 | -2.05% |
| BVH | -1600 | -1.66% |

| 下跌排名/ 股碼 | Giá trị thay đổi (VND) | 漲跌% |
|-------------|------------------------------|--------|
| NDN | -300 | -2.46% |
| VC3 | -400 | -1.78% |
| TNG | -300 | -1.59% |
| NVB | -100 | -1.14% |
| DHT | -400 | -1.02% |

| 下跌排名/ 股碼 | 漲跌(VND) | 漲跌% |
|-------------|---------|--------|
| VGT | -300 | -2.54% |
| VTP | -4000 | -2.31% |
| VGI | -400 | -2.11% |
| MPC | -600 | -1.27% |
| VLB | -200 | -0.64% |

*備註：市值>5,000 億盾；成交值>15 億盾

| 市值排名/ 股碼 | 十億盾 | |
|-------------|---------|--|
| VIC | 373,420 | |
| VHM | 311,840 | |
| VNM | 259,296 | |
| VCB | 229,950 | |
| GAS | 190,055 | |

| 市值排名/ 股碼 | 十億盾 | |
|-------------|--------|--|
| ACB | 38,039 | |
| VCG | 12,147 | |
| VCS | 9,988 | |
| PVS | 9,703 | |
| VGC | 9,236 | |

| 市值排名/ 股碼 | 十億盾 | |
|-------------|---------|--|
| ACV | 192,896 | |
| MCH | 66,901 | |
| VEA | 64,234 | |
| HVN | 55,129 | |
| BSR | 43,485 | |

| 交易量排 名/股碼 | 成交值 | 30 日均 |
|--------------|------------|-----------|
| AMD | 16,080,860 | 4,195,454 |
| HPG | 11,781,980 | 6,188,743 |
| HSG | 8,491,600 | 3,327,098 |
| STB | 6,896,200 | 5,110,531 |
| EIB | 6,745,890 | 832,278 |

| 交易量排 名/股碼 | 成交值 | 30 日均 |
|--------------|-----------|-----------|
| PVS | 5,804,809 | 3,417,829 |
| SHB | 5,221,870 | 5,042,647 |
| ACB | 3,928,674 | 1,838,775 |
| VGC | 2,073,880 | 1,973,162 |
| SHS | 1,853,423 | 776,148 |

| 交易量排 名/股碼 | 成交值 | 30 日均 |
|--------------|-----------|-----------|
| VLB | 2,029,300 | 495,322 |
| BSR | 1,622,834 | 1,538,387 |
| GEG | 1,399,660 | 336,835 |
| VGT | 1,245,470 | 2,799,263 |
| LPB | 889,710 | 759,873 |

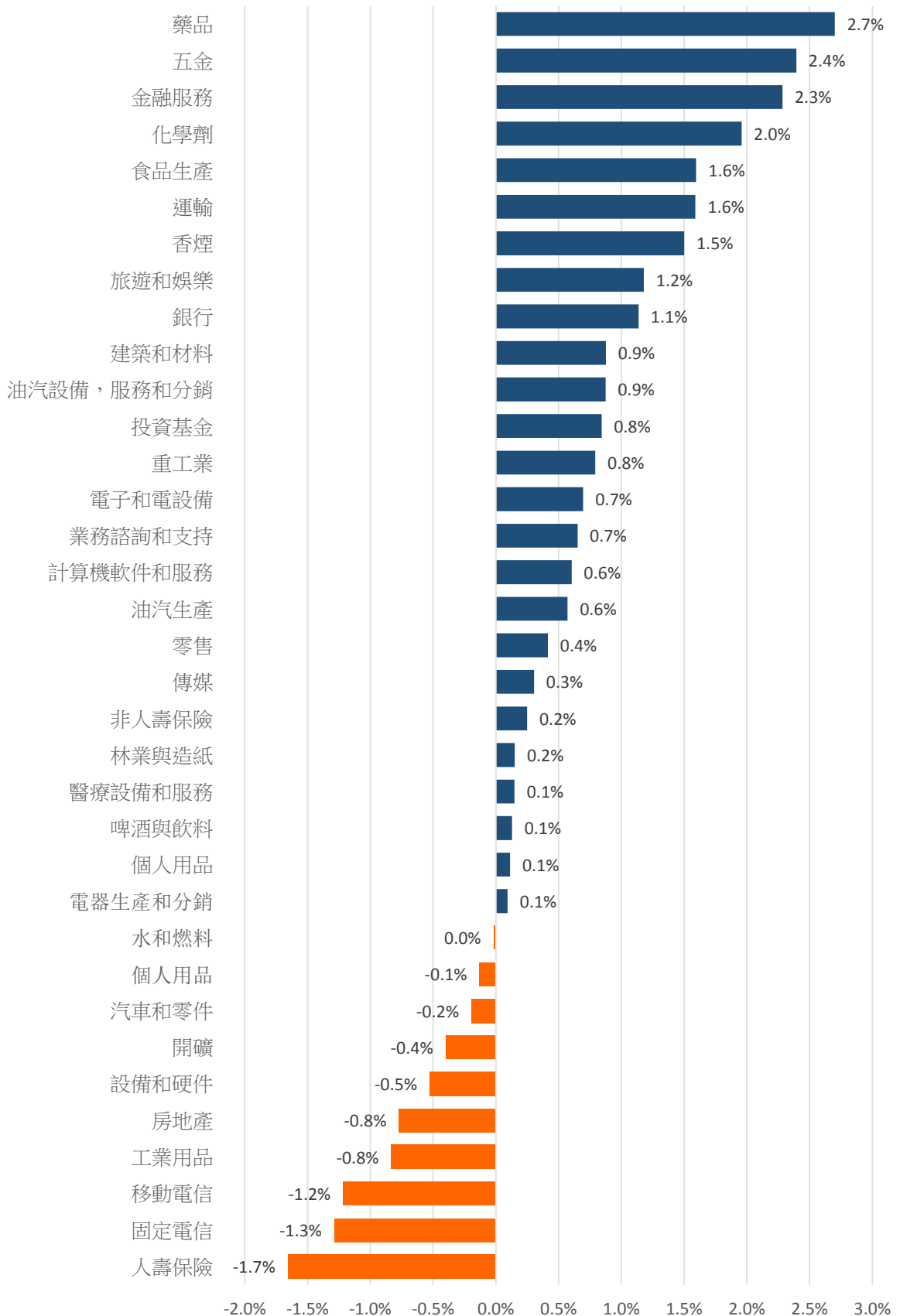
資料源: Bloomberg & Yuanta Research

資料源: Bloomberg & Yuanta Research

資料源: Bloomberg & Yuanta Research

We Create Fortune

各行業板塊的交易走勢



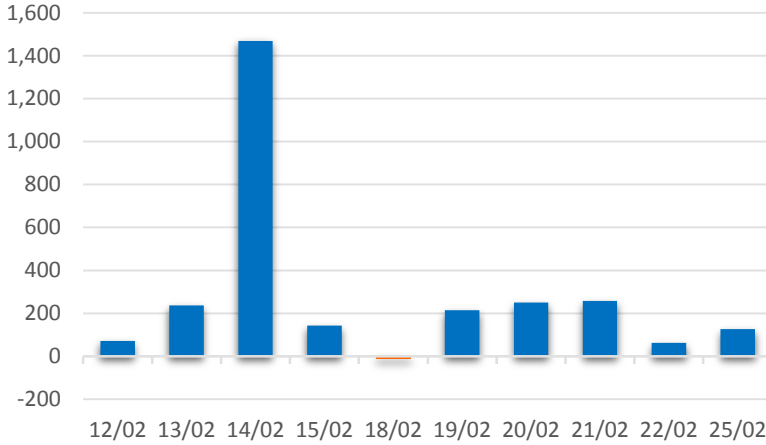
資料源: FiinPro – YSVN



We Create **Fortune**

外資買進賣統計

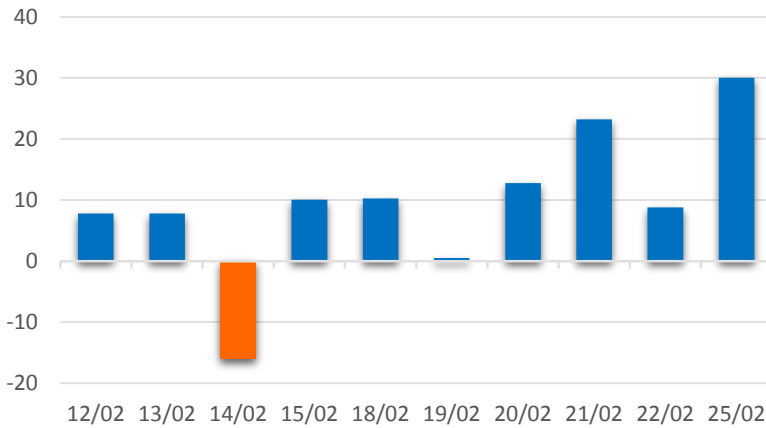
HSX 外資每日買/賣超



| 證券代碼 | 買超金額 (百萬盾) | 證券代碼 | 賣超金額 (百萬盾) |
|------------|------------|------------|------------|
| MSN | 68,539 | VRE | 53,038 |
| VCB | 65,182 | VJC | 37,212 |
| HPG | 40,972 | VHM | 29,880 |
| SSI | 39,397 | DHG | 28,264 |
| GEX | 37,188 | CII | 18,234 |

HSX 外資買/賣 超的前 5 名

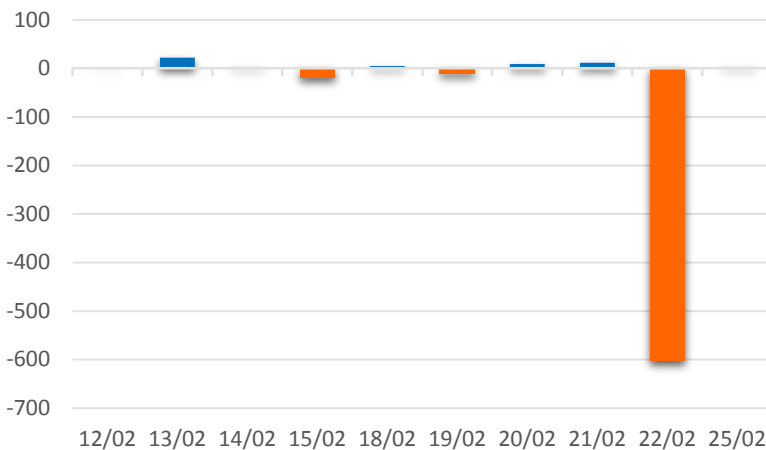
HNX 外資每日買/賣超



| 證券代碼 | 買超金額 (百萬盾) | 證券代碼 | 賣超金額 (百萬盾) |
|------------|------------|------------|------------|
| PVS | 38,073 | SHS | 3,157 |
| VGC | 353 | SHB | 2,508 |
| TV2 | 255 | CEO | 1,822 |
| SRA | 156 | BVS | 557 |
| DHT | 133 | PGS | 272 |

HNX 外資買/賣 超的前 5 名

UPCOM 外資每日買/賣超



| 證券代碼 | 買超金額 (百萬盾) | 證券代碼 | 賣超金額 (百萬盾) |
|------------|------------|------------|------------|
| ACV | 9,760 | GEG | 18,470 |
| BSR | 5,381 | VEA | 3,322 |
| QNS | 4,305 | KDF | 744 |
| OIL | 3,299 | MPC | 426 |
| VTP | 1,144 | VGI | 168 |

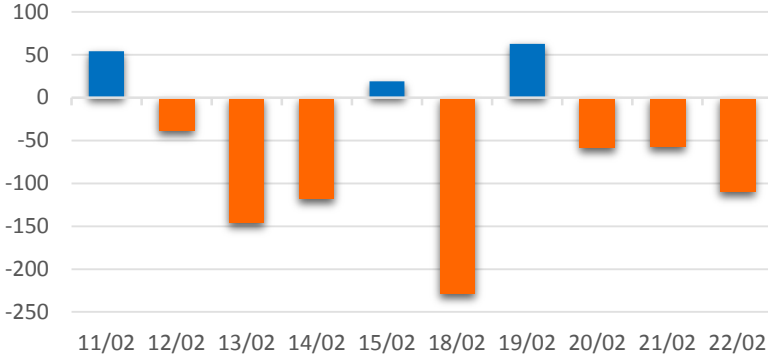
UPCOM 外資買/賣 超的前 5 名



We Create Fortune

自營進出統計

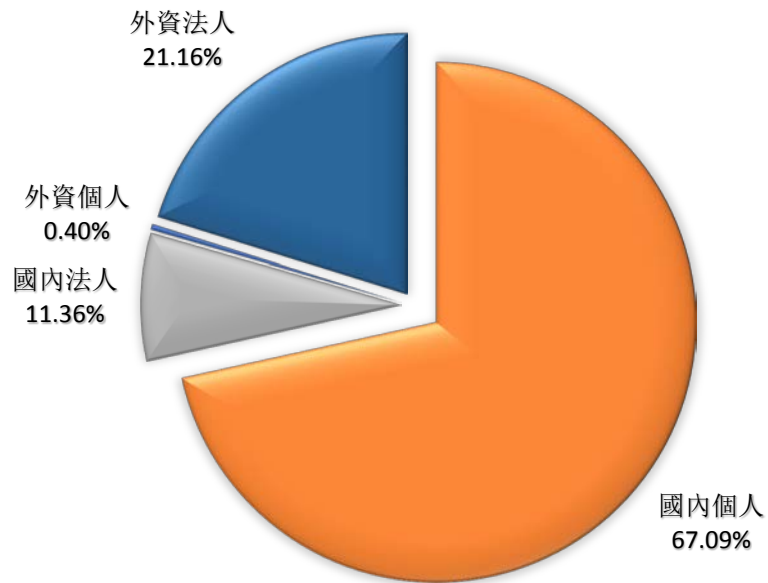
券商自營交易每日買/賣超 (bil. VND)



| 股票代碼 | 買進金額 (百萬盾) | 股票代碼 | 賣出金額 (百萬盾) |
|------|------------|---------|------------|
| HPG | 17,888 | VHM | 71,766 |
| VIC | 8,583 | E1VFN30 | 29,296 |
| VHM | 7,509 | TCB | 14,605 |
| DIG | 4,951 | CTG | 9,676 |
| REE | 3,306 | MBB | 7,448 |

券商自營交易最大前名

越南證券市場投資人類別統計

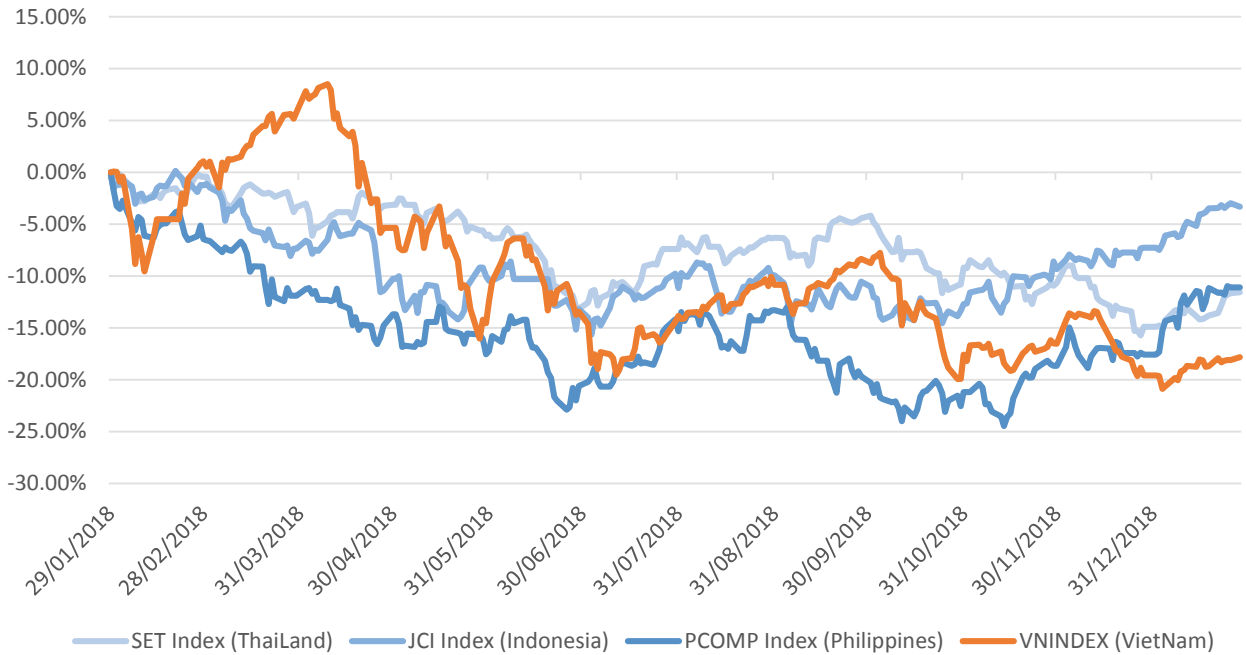


資料源: FiinPro – YSVN



We Create Fortune

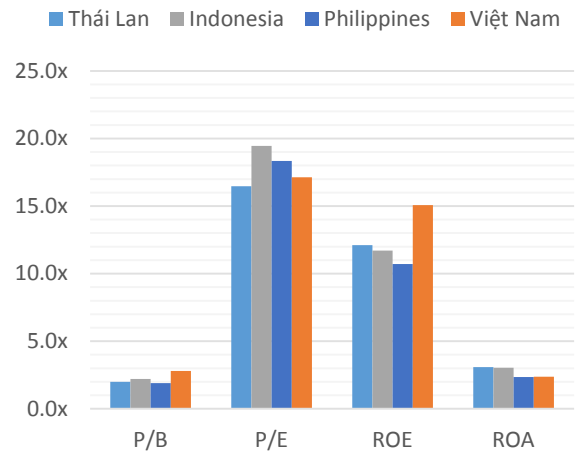
東南亞主要市場走勢比較



東南亞主要市場數據

| | | Thailand | Indonesia | Philippines | Vietnam |
|-------|---------|----------|-----------|-------------|---------|
| P/B | | 2.0x | 2.2x | 1.9x | 2.8x |
| P/E | | 16.5x | 19.5x | 18.3x | 17.1x |
| ROE | % | 12.11 | 11.70 | 10.72 | 15.08 |
| ROA | % | 3.08 | 3.04 | 2.36 | 2.38 |
| 指數市值 | Bil.USD | 519.50 | 431.00 | 164 | 137.00 |
| 日成交 | Mil.USD | 1.40 | 0.28 | 0.05 | 0.15 |
| 股息殖利率 | % | 3.16 | 2.33 | 1.65 | 2.11 |

BloomBerg & YSVN





We Create **Fortune**

元大證券（越南）股份公司

個人客戶分析部

Nguyễn Thế Minh

研究分析經理

+84 28 3622 6868 ext 3826

minh.nguyen@yuantan.com.vn

Quách Đức Khánh

高級分析專員

+84 28 3622 6868 ext 3833

khanh.quach@yuantan.com.vn

Nguyễn Trịnh Ngọc Hồng

分析專員

+84 28 3622 6868 ext 3832

hong.nguyen@yuantan.com.vn

個人客戶業務部

Nguyễn Thanh Tùng

總公司業務經理

+84 28 3622 6868 ext 3609

tung.nguyen@yuantan.com.vn

Chung Kim Hoa

華人客戶部經理

+84 28 3622 6868 ext 3828

hoa.chung@yuantan.com.vn

Phù Vĩnh Qué

堤岸分行經理

+84 28 3622 6868

que.phu@yuantan.com.vn

Nguyễn Việt Quang

河內分行經理

+84 28 3622 6868 ext 3404

quang.nguyen@yuantan.com.vn

Võ Thị Thu Thủy

平陽分行經理

+84 28 3622 6868 ext 3505

thuy.vo@yuantan.com.vn

Bùi Quốc Phong

同奈分行經理

+84 28 3622 6868

phong.bui@yuantan.com.vn

Nguyễn Đức Hoàn

河內南部營業中心經理

+84 28 3622 6868 ext 3409

hoan.nguyen@yuantan.com.vn



We Create **Fortune**

Appendix A: Important Disclosures

Analyst Certification

Each research analyst primarily responsible for the content of this research report, in whole or in part, certifies that with respect to each security or issuer that the analyst covered in this report: (1) all of the views expressed accurately reflect his or her personal views about those securities or issuers; and (2) no part of his or her compensation was, is, or will be, directly or indirectly, related to the specific recommendations or views expressed by that research analyst in the research report.

Ratings Definitions

BUY: We have a positive outlook on the stock based on our expected absolute or relative return over the investment period. Our thesis is based on our analysis of the company's outlook, financial performance, catalysts, valuation and risk profile. We recommend investors add to their position.

HOLD-Outperform: In our view, the stock's fundamentals are relatively more attractive than peers at the current price. Our thesis is based on our analysis of the company's outlook, financial performance, catalysts, valuation and risk profile.

HOLD-Underperform: In our view, the stock's fundamentals are relatively less attractive than peers at the current price. Our thesis is based on our analysis of the company's outlook, financial performance, catalysts, valuation and risk profile.

SELL: We have a negative outlook on the stock based on our expected absolute or relative return over the investment period. Our thesis is based on our analysis of the company's outlook, financial performance, catalysts, valuation and risk profile. We recommend investors reduce their position.

Under Review: We actively follow the company, although our estimates, rating and target price are under review.

Restricted: The rating and target price have been suspended temporarily to comply with applicable regulations and/or Yuanta policies.

Note: Yuanta research coverage with a Target Price is based on an investment period of 12 months. Greater China Discovery Series coverage does not have a formal 12 month Target Price and the recommendation is based on an investment period specified by the analyst in the report.

Global Disclaimer

© 2018 Yuanta. All rights reserved. The information in this report has been compiled from sources we believe to be reliable, but we do not hold ourselves responsible for its completeness or accuracy. It is not an offer to sell or solicitation of an offer to buy any securities. All opinions and estimates included in this report constitute our judgment as of this date and are subject to change without notice.

This report provides general information only. Neither the information nor any opinion expressed herein constitutes an offer or invitation to make an offer to buy or sell securities or other investments. This material is prepared for general circulation to clients and is not intended to provide tailored investment advice and does not take into account the individual financial situation and objectives of any specific person who may receive this report. Investors should seek financial advice regarding the appropriateness of investing in any securities, investments or investment strategies discussed or recommended in this report. The information contained in this report has been compiled from sources believed to be reliable but no representation or warranty, express or implied, is made as to its accuracy, completeness or correctness. This report is not (and should not be construed as) a solicitation to act as securities broker or dealer in any jurisdiction by any person or company that is not legally permitted to carry on such business in that jurisdiction.

Yuanta research is distributed in the United States only to Major U.S. Institutional Investors (as defined in Rule 15a-6 under the Securities Exchange Act of 1934, as amended and SEC staff interpretations thereof). All transactions by a US person in the securities mentioned in this report must be effected through a registered broker-dealer under Section 15 of the Securities Exchange Act of 1934, as amended. Yuanta research is distributed in Taiwan by Yuanta Securities Investment Consulting. Yuanta research is distributed in Hong Kong by Yuanta Securities (Hong Kong) Co. Limited, which is licensed in Hong Kong by the Securities and Futures Commission for regulated activities, including Type 4 regulated activity (advising on securities). In Hong Kong, this research report may not be redistributed, retransmitted or disclosed, in whole or in part or any form or manner, without the express written