

當日市場：外資強勁買超

2019/12/19

市場走勢 2019/9/20

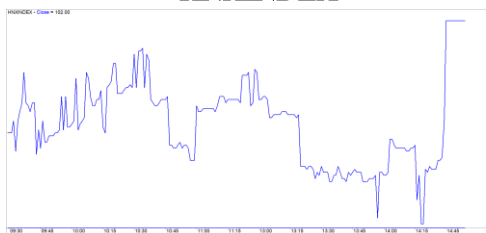
| 市場指數 | VNI | HNI | UPCOM |
|-----------------|--------|--------|--------|
| 收盤 | 952.26 | 102.00 | 55.47 |
| %日 | 0.12% | 0.20% | 0.31% |
| %週 | -1.64% | -0.69% | -0.09% |
| %月 | -5.56% | -3.31% | -2.72% |
| %年 | 3.59% | -2.07% | 5.28% |
| 成交值(十億盾) | | | |
| 當日 | 4,351 | 281 | 266 |
| 日均量/週 | 4,939 | 350 | 190 |
| 日均量/月 | 4,613 | 301 | 211 |
| 外資進出 | | | |
| 買進 | 833.09 | 2.23 | 6.33 |
| 賣出 | 639.71 | 5.80 | 2.81 |
| 買賣超 | 193.38 | -3.57 | 3.52 |
| 市場漲跌家數 | | | |
| 上漲 | 126 | 73 | 172 |
| 下跌 | 147 | 45 | 96 |
| 持平 | 116 | 251 | 634 |
| 市場指標 | | | |
| P/E | 15.53 | 9.04 | 17.21 |
| 總市值 (兆盾) | 3,251 | 191 | 945 |
| 股息殖利率 | 2.28% | 4.24% | 4.02% |

資料源: Bloomberg - YSVN

VNINDEX



HNIINDEX



市場走勢

VN 指數在連續四盤下跌後就開始恢復，指數收於 952.26 點，上漲 0.12%。HNX 指數和 Upcom 指數也分別上漲 0.19%和 0.5%，收於 102 點和 55.47 點。但交易價值僅達約 3 兆 3 千億越南盾。

市場仍然分歧，VCB (+ 1.5%)，VRE (+ 1.4%)，VNM (+ 0.9%)，GAS (+ 0.3%)，GMD (+ 1.1%)，HPG (+ 1.1%) 是推動上漲趨勢的主要股碼。VRE 在經歷了近期的大幅下跌後也有恢復的跡象，VNM 連續第二盤表現良好，價格正在提高底部。相反，BVH (-2.1%)，MBB (-1.4%)，TCB (-1.5%)，MBB (-1.4%)，HDB (-0.9%) 是對指數造成負面影響的股碼。TCH (-4.9%)，PHR (-2.5%)，GTN (-2.4%) 等中型股突然被強勁拋售；因此 VNMID 指數今天下跌了 0.5%。HAI 的收盤下跌至 3,720 越南盾，這是該股強勁下跌的第二盤。

外資是市場亮點，因買超超過 1,930 億越南盾。主要購買 VNM (878 億)，VCB (653 億) 和 E1VFN30 (304 億)。相反集中拋售 VIC (400 億)。

市場觀點

我們認為，兩個 ETF 基金的投資組合重組的交易盤可能會劇烈波動且流動性較高。同時，短期風險略有減少，但風險水平仍然很高，如果價格圖表在下盤保持恢復勢頭，我們評估短期風險水平可能會繼續減少。此外，股票比重持續下降，表明短期策略仍在重組投資組合。

我們的趨勢指標系統維持兩個指數的短期下跌趨勢，VN 指數的阻力位於 967.62 點，HNX 指數的阻力位於 103.69 點。因此，出於謹慎的考慮，投資者繼續觀察市場。同時，若投資者之前已購買新股，則可以重組投資組合併限制新的購買。

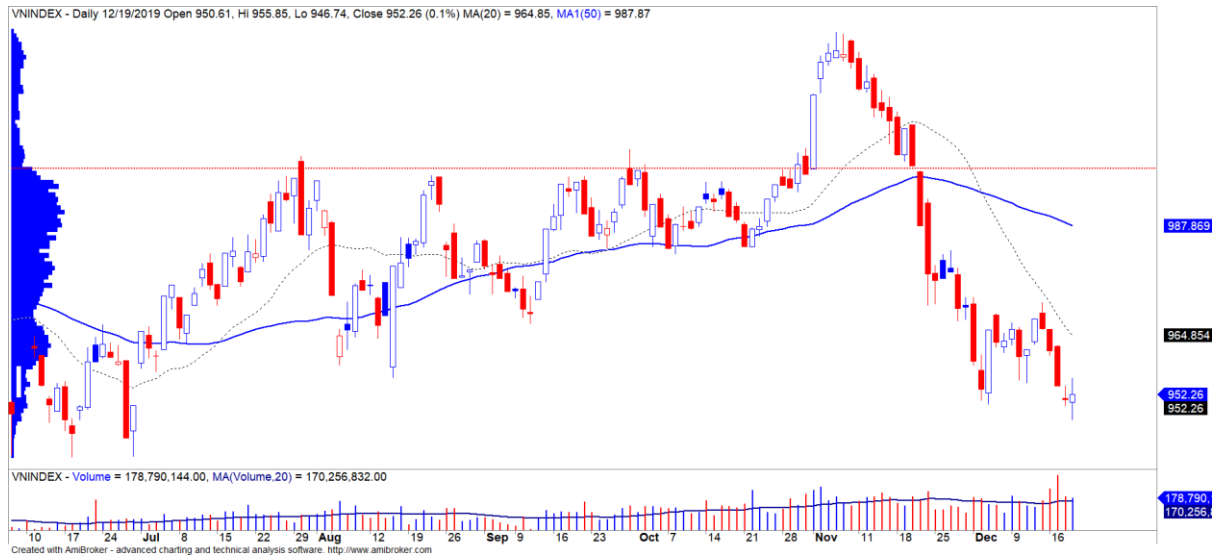
建議短線投資比重：38%股票/ 62%現金。

(股票趨勢追蹤圖在下一頁內更新)



We Create Fortune

技術分析圖



指數技術分析圖 VN-Index



指數技術分析圖 HNX-Index

| 指數 | 短期趨勢 | 中期趨勢 | 阻力區 1 | 阻力區 2 | 支撐區 1 | 支撐區 2 |
|-------------|------|------|-------|-------|-------|-------|
| VN-Index | 下跌 | 下跌 | 997 | 1,000 | 988 | 953 |
| HNX-Index | 下跌 | 下跌 | 106 | 108 | 99 | 90 |
| VN30 | 下跌 | 下跌 | 895 | 935 | 877 | 863 |
| VNMidcaps | 下跌 | 下跌 | 992 | 1,030 | 969 | 963 |
| VNSmallcaps | 上漲 | 下跌 | 835 | 845 | 822 | 804 |

We Create Fortune

股票趨勢追蹤表

| 股票 | 價格 | 短期趨勢 | 中期趨勢 | 短期買進價格 | 短期停損 | 暫計短期利潤% | 短期訊號 | 中期買進價格 | 中期停損 | 暫計中期利潤% | 中期訊號 |
|-----|-------|------|------|--------|-------|---------|------|--------|-------|---------|------|
| AAA | 13.55 | 下跌 | 下跌 | | 14.33 | | | | 15.40 | | |
| ACB | 22.50 | 下跌 | 下跌 | | 23.38 | | | 24.00 | 22.57 | -5.95% | |
| ACV | 75.10 | 上漲 | 下跌 | 74.00 | 72.31 | 1.49% | | | 78.74 | | |
| ANV | 22.00 | 下跌 | 下跌 | 22.95 | 22.04 | -3.98% | 賣出 | | 25.91 | | |
| ASM | 6.69 | 上漲 | 下跌 | 6.71 | 6.65 | -0.30% | | | 7.24 | | |
| BFC | 11.85 | 下跌 | 下跌 | | 12.69 | | | | 16.05 | | |
| BID | 42.20 | 上漲 | 上漲 | 41.90 | 40.31 | 0.72% | | 33.40 | 38.49 | 26.35% | |
| BMP | 46.60 | 上漲 | 上漲 | 49.00 | 46.21 | -4.90% | | 48.30 | 46.42 | -3.52% | |
| BSR | 8.10 | 下跌 | 下跌 | | 8.89 | | | | 10.51 | | |
| BVH | 71.50 | 上漲 | 下跌 | 72.70 | 69.87 | -1.65% | | | 74.17 | | |
| BWE | 25.00 | 上漲 | 下跌 | 17.40 | 23.87 | 43.68% | | | 25.84 | | |
| CEO | 9.10 | 上漲 | 下跌 | 9.30 | 8.81 | -2.15% | | | 9.80 | | |
| CII | 22.50 | 下跌 | 上漲 | | 23.64 | | | 24.45 | 22.23 | -7.98% | |
| CMG | 36.00 | 下跌 | 上漲 | | 38.26 | | | 23.20 | 34.96 | 55.17% | |
| CMX | 15.40 | 下跌 | 下跌 | | 16.21 | | | | 20.03 | | |
| CSM | 14.10 | 下跌 | 下跌 | | 14.46 | | | 14.39 | 14.22 | -1.15% | 賣出 |
| CTD | 61.00 | 下跌 | 下跌 | | 65.91 | | | | 75.63 | | |
| CTG | 20.15 | 上漲 | 下跌 | 20.60 | 19.65 | -2.18% | | | 21.78 | | |
| CTR | 40.10 | 上漲 | N/A | 43.30 | 40.08 | -7.39% | | - | N/A | | |
| CVT | 20.40 | 下跌 | 下跌 | | 21.33 | | | | 22.85 | | |
| DCM | 6.63 | 下跌 | 下跌 | | 6.78 | | | | 7.30 | | |
| DGC | 27.20 | 下跌 | 上漲 | | 29.18 | | | 29.70 | 24.84 | -8.42% | |
| DGW | 22.70 | 下跌 | 下跌 | | 24.20 | | | | 25.88 | | |
| DHA | 30.70 | 上漲 | 下跌 | 31.85 | 28.64 | -3.61% | | | 32.52 | | |
| DHC | 39.00 | 下跌 | 上漲 | | 41.40 | | | 37.70 | 36.98 | 3.45% | |
| DHG | 92.70 | 下跌 | 下跌 | | 95.01 | | | | 99.56 | | |
| DIG | 13.40 | 下跌 | 下跌 | | 13.90 | | | | 14.69 | | |
| DPG | 44.30 | 下跌 | 下跌 | | 45.90 | | | | 50.61 | | |
| DPM | 12.90 | 下跌 | 下跌 | 13.50 | 12.96 | -4.01% | 賣出 | | 14.36 | | |
| DPR | 38.40 | 下跌 | 上漲 | 37.60 | 38.44 | 2.24% | 賣出 | 41.30 | 37.99 | -7.02% | |
| DQC | 15.70 | 下跌 | 下跌 | | 16.41 | | | | 17.68 | | |
| DRC | 22.45 | 下跌 | 上漲 | | 23.82 | | | 21.60 | 21.25 | 3.94% | |
| DXG | 13.95 | 下跌 | 下跌 | | 14.60 | | | | 16.12 | | |
| EIB | 16.60 | 下跌 | 上漲 | | 17.60 | | | 18.40 | 16.46 | -9.78% | |

We Create Fortune

| | | | | | | | | | | |
|-----|--------|----|-----|--------|--------|--------|-------|--------|---------|----|
| FCN | 10.00 | 下跌 | 下跌 | | 10.35 | | | 11.21 | | |
| FMC | 27.55 | 上漲 | 上漲 | 27.45 | 26.70 | 0.36% | 31.60 | 26.18 | -12.82% | |
| FPT | 55.80 | 上漲 | 上漲 | 57.00 | 55.02 | -2.11% | 46.00 | 54.99 | 21.30% | |
| GAS | 95.80 | 下跌 | 下跌 | | 100.28 | | | 108.03 | | |
| GEX | 19.70 | 下跌 | 下跌 | | 20.48 | | | 21.53 | | |
| GIL | 17.45 | 下跌 | 下跌 | | 18.53 | | | 20.90 | | |
| GMD | 23.80 | 上漲 | 下跌 | 23.60 | 22.87 | 0.85% | | 25.34 | | |
| GTN | 22.00 | 上漲 | 上漲 | 21.70 | 21.06 | 1.38% | 15.00 | 18.98 | 46.67% | |
| GVR | 12.00 | 下跌 | N/A | | 12.93 | | | N/A | | |
| HAG | 3.95 | 上漲 | 下跌 | 3.86 | 3.82 | 2.33% | | 4.22 | | |
| HAX | 17.65 | 上漲 | 下跌 | 18.60 | 17.42 | -5.11% | | 20.95 | | |
| HBC | 10.60 | 下跌 | 下跌 | | 11.45 | | | 12.77 | | |
| HCM | 21.30 | 下跌 | 下跌 | | 23.25 | | 23.40 | 22.58 | -3.51% | |
| HDB | 26.20 | 下跌 | 下跌 | | 27.83 | | | 29.49 | | |
| HDC | 23.20 | 上漲 | 上漲 | 23.10 | 21.99 | 0.43% | 15.25 | 20.25 | 52.13% | |
| HDG | 32.60 | 上漲 | 下跌 | 32.95 | 31.50 | -1.06% | | 35.72 | | |
| HNG | 14.15 | 下跌 | 下跌 | | 14.92 | | | 15.88 | | |
| HPG | 22.80 | 下跌 | 上漲 | | 23.87 | | 23.85 | 21.17 | -4.40% | |
| HSG | 8.13 | 上漲 | 上漲 | 8.40 | 8.00 | -3.21% | 7.75 | 6.98 | 4.90% | |
| HT1 | 14.95 | 上漲 | 上漲 | 15.25 | 14.66 | -1.97% | 16.90 | 13.91 | -11.54% | |
| HUT | 2.50 | 上漲 | 下跌 | 2.40 | 2.38 | 4.17% | | 2.71 | | |
| HVN | 34.20 | 下跌 | 下跌 | | 34.76 | | | 36.93 | | |
| KBC | 14.85 | 下跌 | 上漲 | | 15.08 | | 15.35 | 14.00 | -3.26% | |
| KDH | 26.30 | 下跌 | 上漲 | | 27.13 | | 24.00 | 24.58 | 9.58% | |
| KSB | 17.85 | 上漲 | 下跌 | 17.75 | 17.04 | 0.56% | | 19.42 | | |
| LCG | 8.15 | 上漲 | 下跌 | 8.54 | 7.97 | -4.57% | | 8.76 | | |
| LDG | 8.50 | 下跌 | 下跌 | | 9.24 | | | 10.22 | | |
| LHG | 15.20 | 下跌 | 下跌 | | 15.65 | | | 16.89 | | |
| LPB | 7.20 | 下跌 | 下跌 | | 7.65 | | | 8.13 | | |
| MBB | 20.70 | 下跌 | 下跌 | | 21.94 | | 21.85 | 21.83 | -0.10% | 賣出 |
| MPC | 20.60 | 上漲 | 下跌 | 20.10 | 19.76 | 2.49% | | 23.55 | | |
| MSN | 55.60 | 下跌 | 下跌 | | 60.32 | | | 72.99 | | |
| MSR | 13.80 | 下跌 | 下跌 | | 14.63 | | | 16.67 | | |
| MWG | 110.00 | 上漲 | 下跌 | 113.40 | 109.49 | -3.00% | | 122.49 | | |
| NDN | 16.90 | 上漲 | 上漲 | 17.40 | 16.71 | -2.87% | 13.70 | 16.27 | 23.36% | |
| NKG | 6.77 | 上漲 | 上漲 | 6.50 | 6.75 | 4.15% | 7.11 | 6.45 | -4.78% | 買進 |
| NLG | 26.50 | 下跌 | 上漲 | | 27.53 | | 28.70 | 26.30 | -7.67% | |
| NT2 | 22.30 | 下跌 | 下跌 | | 22.82 | | | 24.05 | | |
| NTL | 23.85 | 上漲 | 下跌 | 24.40 | 23.42 | -2.25% | | 24.88 | | |

We Create Fortune

| | | | | | | | | | | | |
|-----|--------|----|----|-------|--------|--------|----|-------|--------|---------|----|
| NVL | 55.70 | 下跌 | 下跌 | | 57.48 | | | | 60.82 | | |
| OIL | 8.70 | 下跌 | 下跌 | | 9.61 | | | | 10.77 | | |
| PAC | 25.35 | 上漲 | 下跌 | 25.80 | 24.79 | -1.74% | | | 27.90 | | |
| PC1 | 17.50 | 下跌 | 下跌 | | 18.12 | | | | 20.48 | | |
| PDR | 25.50 | 下跌 | 上漲 | | 27.13 | | | 29.00 | 25.39 | -12.07% | |
| PHR | 51.10 | 下跌 | 下跌 | | 54.87 | | | | 63.14 | | |
| PLX | 55.40 | 下跌 | 下跌 | | 57.05 | | | | 61.28 | | |
| PNJ | 81.50 | 下跌 | 上漲 | | 84.55 | | | 77.07 | 78.71 | 5.75% | |
| POW | 12.45 | 下跌 | 下跌 | | 12.86 | | | | 13.98 | | |
| PVT | 16.60 | 下跌 | 上漲 | | 17.18 | | | 18.30 | 16.28 | -9.29% | |
| PPC | 28.50 | 上漲 | 上漲 | 28.30 | 27.77 | 0.71% | | 28.40 | 24.50 | 0.35% | |
| PTB | 72.00 | 下跌 | 上漲 | | 72.64 | | | 64.00 | 68.51 | 12.50% | |
| PVB | 18.70 | 下跌 | 上漲 | | 19.03 | | | 19.42 | 18.62 | -3.69% | 賣出 |
| PVD | 15.20 | 下跌 | 下跌 | | 15.20 | | | | 17.08 | | |
| PVI | 31.00 | 下跌 | 下跌 | | 31.93 | | | | 34.22 | | |
| PVS | 17.90 | 上漲 | 下跌 | 17.80 | 16.94 | 0.56% | | | 19.30 | | |
| PXS | 5.40 | 下跌 | 上漲 | | 5.70 | | | 6.20 | 4.88 | -12.90% | |
| QNS | 29.00 | 下跌 | 上漲 | | 29.83 | | | 33.80 | 28.38 | -14.20% | |
| REE | 35.80 | 下跌 | 上漲 | | 37.19 | | | 33.33 | 35.23 | 7.43% | |
| SAB | 233.00 | 下跌 | 下跌 | | 240.04 | | | | 255.47 | | |
| SAM | 8.17 | 上漲 | 上漲 | 8.15 | 7.94 | 0.25% | | 7.40 | 7.58 | 10.41% | |
| SCR | 5.54 | 下跌 | 上漲 | | 5.99 | | | 6.33 | 5.40 | -12.48% | |
| SHI | 9.00 | 下跌 | 上漲 | | 9.22 | | | 6.99 | 8.30 | 28.76% | |
| SJS | 16.85 | 下跌 | 下跌 | | 16.92 | | | | 16.88 | | |
| SKG | 11.45 | 上漲 | 下跌 | 11.60 | 11.18 | -1.29% | | | 11.70 | | |
| SSI | 18.10 | 下跌 | 下跌 | | 19.41 | | | | 21.51 | | |
| STB | 9.93 | 下跌 | 下跌 | | 10.28 | | | | 10.82 | | |
| TCB | 22.35 | 下跌 | 下跌 | 23.45 | 22.36 | -4.64% | 賣出 | | 25.07 | | |
| TCM | 19.40 | 上漲 | 下跌 | 19.95 | 19.14 | -2.76% | | | 22.29 | | |
| TDH | 9.92 | 下跌 | 下跌 | 10.25 | 9.92 | -3.18% | 賣出 | | 11.11 | | |
| TLH | 4.19 | 上漲 | 下跌 | 4.06 | 4.09 | 3.20% | | | 4.43 | | |
| TNG | 15.50 | 上漲 | 下跌 | 15.10 | 14.47 | 2.65% | | | 16.69 | | |
| VCB | 88.00 | 上漲 | 上漲 | 87.50 | 84.75 | 0.57% | | 62.00 | 84.02 | 41.94% | |
| VCG | 26.90 | 上漲 | 上漲 | 27.00 | 26.60 | -0.37% | | 19.20 | 25.35 | 40.10% | |
| VCS | 82.20 | 上漲 | 下跌 | 83.10 | 79.18 | -1.08% | | | 91.56 | | |
| VGC | 18.05 | 下跌 | 下跌 | | 18.42 | | | | 19.68 | | |
| VGT | 8.10 | 下跌 | 下跌 | | 8.90 | | | | 8.95 | | |
| VHC | 77.00 | 下跌 | 下跌 | | 81.16 | | | | 83.84 | | |
| VHM | 83.90 | 下跌 | 下跌 | | 88.58 | | | 90.20 | 89.66 | -0.60% | 賣出 |

We Create Fortune

| | | | | | | | | | | | |
|-----|--------|----|----|-------|--------|--------|--|--------|--------|--------|--|
| VIB | 17.10 | 下跌 | 上漲 | | 17.34 | | | 17.70 | 16.56 | -3.39% | |
| VIC | 115.80 | 下跌 | 上漲 | | 117.72 | | | 112.00 | 113.76 | 3.39% | |
| VIP | 5.00 | 下跌 | 下跌 | | 5.09 | | | | 5.30 | | |
| VJC | 142.60 | 下跌 | 上漲 | | 144.44 | | | 124.50 | 138.01 | 14.54% | |
| VND | 14.55 | 上漲 | 下跌 | 14.10 | 13.88 | 3.19% | | | 14.88 | | |
| VNG | 19.85 | 下跌 | 下跌 | | 20.95 | | | | 22.24 | | |
| VNM | 119.70 | 下跌 | 下跌 | | 121.35 | | | | 128.87 | | |
| VPB | 19.20 | 下跌 | 下跌 | | 19.96 | | | | 21.37 | | |
| VPI | 41.20 | 下跌 | 上漲 | | 42.10 | | | 41.30 | 39.68 | -0.24% | |
| VRC | 24.95 | 上漲 | 上漲 | 16.05 | 22.72 | 55.45% | | 17.30 | 20.63 | 44.22% | |
| VRE | 32.40 | 下跌 | 上漲 | | 34.00 | | | 35.05 | 32.08 | -7.56% | |
| VSC | 26.00 | 上漲 | 下跌 | 25.45 | 24.56 | 2.16% | | | 26.67 | | |

LARGECAPS 大型股票趨勢追蹤表

| 股票 | 價格 | 短期趨勢 | 中期趨勢 | 短期買進價格 | 短期停損 | 暫計短期利潤% | 短期訊號 | 中期買進價格 | 中期停損 | 暫計中期利潤% | 中期訊號 |
|-----|--------|------|------|--------|--------|---------|------|--------|--------|---------|------|
| ACB | 22.50 | 下跌 | 下跌 | | 23.38 | | | 24.00 | 22.57 | -5.95% | |
| BID | 42.20 | 上漲 | 上漲 | 41.90 | 40.31 | 0.72% | | 33.40 | 38.49 | 26.35% | |
| BSR | 8.10 | 下跌 | 下跌 | | 8.89 | | | | 10.51 | | |
| BVH | 71.50 | 上漲 | 下跌 | 72.70 | 69.87 | -1.65% | | | 74.17 | | |
| CTG | 20.15 | 上漲 | 下跌 | 20.60 | 19.65 | -2.18% | | | 21.78 | | |
| FPT | 55.80 | 上漲 | 上漲 | 57.00 | 55.02 | -2.11% | | 40.23 | 54.99 | 38.72% | |
| GAS | 95.80 | 下跌 | 下跌 | | 100.28 | | | | 108.03 | | |
| GEX | 19.70 | 下跌 | 下跌 | | 20.48 | | | | 21.53 | | |
| GVR | 12.00 | 下跌 | N/A | | 12.93 | | | | N/A | | |
| HDB | 26.20 | 下跌 | 下跌 | | 27.83 | | | | 29.49 | | |
| HNG | 14.15 | 下跌 | 下跌 | | 14.92 | | | | 15.88 | | |
| HPG | 22.80 | 下跌 | 上漲 | | 23.87 | | | 23.85 | 21.17 | -4.40% | |
| HVN | 34.20 | 下跌 | 下跌 | | 34.76 | | | | 36.93 | | |
| KDH | 26.30 | 下跌 | 上漲 | | 27.13 | | | 24.00 | 24.58 | 9.58% | |
| MBB | 20.70 | 下跌 | 下跌 | | 21.94 | | | 19.72 | 21.83 | 10.69% | 賣出 |
| MSN | 55.60 | 下跌 | 下跌 | | 60.32 | | | | 72.99 | | |
| MWG | 110.00 | 上漲 | 下跌 | 113.40 | 109.49 | -3.00% | | | 122.49 | | |
| NVL | 55.70 | 下跌 | 下跌 | | 57.48 | | | | 60.82 | | |
| OIL | 8.70 | 下跌 | 下跌 | | 9.61 | | | | 10.77 | | |
| PLX | 55.40 | 下跌 | 下跌 | | 57.05 | | | | 61.28 | | |
| PNJ | 81.50 | 下跌 | 上漲 | | 84.55 | | | 77.07 | 78.71 | 5.75% | |

We Create Fortune

| | | | | | | | | | | | |
|-----|--------|----|-----|-------|--------|--------|----|--------|--------|---------|----|
| POW | 12.45 | 下跌 | 下跌 | | 12.86 | | | | 13.98 | | |
| QNS | 29.00 | 下跌 | 上漲 | | 29.83 | | | 33.26 | 28.38 | -12.80% | |
| REE | 35.80 | 下跌 | 上漲 | | 37.19 | | | 33.33 | 35.23 | 7.43% | |
| ROS | 23.70 | 下跌 | 下跌 | | 24.99 | | | | 26.94 | | |
| SBT | 18.00 | 下跌 | 上漲 | | 18.78 | | | 17.50 | 17.46 | 2.86% | |
| SSI | 18.10 | 下跌 | 下跌 | | 19.41 | | | | 21.51 | | |
| STB | 9.93 | 下跌 | 下跌 | | 10.28 | | | | 10.82 | | |
| TCB | 22.35 | 下跌 | 下跌 | 23.45 | 22.36 | -4.64% | 賣出 | | 25.07 | | |
| TPB | 20.80 | 下跌 | 下跌 | | 21.53 | | | | 23.94 | | |
| VCB | 88.00 | 上漲 | 上漲 | 87.50 | 84.75 | 0.57% | | 62.00 | 84.02 | 41.94% | |
| VCG | 26.90 | 上漲 | 上漲 | 27.00 | 26.60 | -0.37% | | 18.44 | 25.35 | 45.87% | |
| VCS | 82.20 | 上漲 | 下跌 | 83.10 | 79.18 | -1.08% | | | 91.56 | | |
| VEA | 48.30 | 下跌 | 下跌 | | 49.93 | | | | 59.45 | | |
| VGI | 25.20 | 上漲 | N/A | 26.80 | 24.48 | -5.97% | | | N/A | | |
| VHM | 83.90 | 下跌 | 下跌 | | 88.58 | | | 89.13 | 89.66 | 0.60% | 賣出 |
| VIB | 17.10 | 下跌 | 上漲 | | 17.34 | | | 15.00 | 16.56 | 13.97% | |
| VIC | 115.80 | 下跌 | 上漲 | | 117.72 | | | 112.00 | 113.76 | 3.39% | |
| VJC | 142.60 | 下跌 | 上漲 | | 144.44 | | | 124.50 | 138.01 | 14.54% | |
| VNM | 119.70 | 下跌 | 下跌 | | 121.35 | | | | 128.87 | | |
| VPB | 19.20 | 下跌 | 下跌 | | 19.96 | | | | 21.37 | | |
| VRE | 32.40 | 下跌 | 上漲 | | 34.00 | | | 35.05 | 32.08 | -7.56% | |

MIDCAPS 中型股票趨勢追蹤表

| 股票 | 價格 | 短期趨勢 | 中期趨勢 | 短期買進價格 | 短期停損 | 暫計短期利潤% | 短期訊號 | 中期買進價格 | 中期停損 | 暫計中期利潤% | 中期訊號 |
|-----|-------|------|------|--------|-------|---------|------|--------|-------|---------|------|
| AAA | 13.55 | 下跌 | 下跌 | | 14.33 | | | | 15.40 | | |
| ANV | 22.00 | 下跌 | 下跌 | 22.95 | 22.04 | -3.98% | 賣出 | | 25.91 | | |
| ASM | 6.69 | 上漲 | 下跌 | 6.71 | 6.65 | -0.30% | | | 7.24 | | |
| BMI | 24.90 | 下跌 | 上漲 | | 25.42 | | | 26.70 | 23.99 | -6.74% | |
| BMP | 46.60 | 上漲 | 上漲 | 49.00 | 46.21 | -4.90% | | 48.30 | 46.42 | -3.52% | |
| BWE | 25.00 | 上漲 | 下跌 | 25.10 | 23.87 | -0.40% | | | 25.84 | | |
| CEO | 9.10 | 上漲 | 下跌 | 9.30 | 8.81 | -2.15% | | | 9.80 | | |
| CII | 22.50 | 下跌 | 上漲 | | 23.64 | | | 24.45 | 22.23 | -7.98% | |
| CRE | 23.85 | 下跌 | 下跌 | | 24.03 | | | | 25.03 | | |
| CTI | 21.80 | 下跌 | 下跌 | | 22.83 | | | | 24.52 | | |
| CTR | 40.10 | 上漲 | 下跌 | 43.30 | 40.08 | -7.39% | | | 51.29 | | |

We Create Fortune

| | | | | | | | | | | | |
|---------|-------|----|------|-------|-------|--------|----|-------|-------|---------|--|
| D2D | 78.00 | 下跌 | 上漲 | | 80.66 | | | 83.10 | 73.17 | -6.14% | |
| DBD | 56.10 | 下跌 | 上漲 | | 60.10 | | | 38.65 | 54.36 | 45.14% | |
| DCM | 6.63 | 下跌 | 下跌 | | 6.78 | | | | 7.30 | | |
| DGW | 22.70 | 下跌 | 下跌 | | 24.20 | | | | 25.88 | | |
| DHC | 39.00 | 下跌 | 上漲 | | 41.40 | | | 37.70 | 36.98 | 3.45% | |
| DIG | 13.40 | 下跌 | 下跌 | | 13.90 | | | | 14.69 | | |
| DPG | 44.30 | 下跌 | 下跌 | | 45.90 | | | | 50.61 | | |
| DPM | 12.90 | 下跌 | 下跌 | 13.50 | 12.96 | -4.01% | 賣出 | | 14.36 | | |
| DRC | 22.45 | 下跌 | 上漲 | | 23.82 | | | 21.60 | 21.25 | 3.94% | |
| DXG | 13.95 | 下跌 | 下跌 | | 14.60 | | | | 16.12 | | |
| E1VFN30 | 14.30 | 下跌 | 下跌 | | 14.78 | | | | 15.57 | | |
| FCN | 10.00 | 下跌 | 下跌 | | 10.35 | | | | 11.21 | | |
| FLC | 4.68 | 上漲 | 上漲 | 4.61 | 4.45 | 1.52% | | 4.63 | 4.02 | 1.08% | |
| GEG | 26.95 | 下跌 | 上漲 | | 27.19 | | | 12.50 | 25.77 | 115.56% | |
| GMD | 23.80 | 上漲 | 下跌 | 23.60 | 22.87 | 0.85% | | | 25.34 | | |
| GTN | 22.00 | 上漲 | 上漲 | 21.70 | 21.06 | 1.38% | | 15.00 | 18.98 | 46.67% | |
| HAG | 3.95 | 上漲 | 下跌 | 3.86 | 3.82 | 2.33% | | | 4.22 | | |
| HBC | 10.60 | 下跌 | 下跌 | | 11.45 | | | | 12.77 | | |
| HCM | 21.30 | 下跌 | 下跌 | | 23.25 | | | 23.40 | 22.58 | -3.51% | |
| HDC | 23.20 | 上漲 | 上漲 | 23.10 | 21.99 | 0.43% | | 15.25 | 20.25 | 52.13% | |
| HDG | 32.60 | 上漲 | 下跌 | 32.95 | 31.50 | -1.06% | | | 35.72 | | |
| HPX | 26.30 | 上漲 | #N/A | 27.50 | 25.87 | -4.36% | | 35.30 | #N/A | #N/A | |
| HSG | 8.13 | 上漲 | 上漲 | 8.40 | 8.00 | -3.21% | | 7.75 | 6.98 | 4.90% | |
| HT1 | 14.95 | 上漲 | 上漲 | 15.25 | 14.66 | -1.97% | | 16.90 | 13.91 | -11.54% | |
| HTM | 16.70 | 上漲 | 下跌 | 16.00 | 15.26 | 4.38% | | | 18.47 | | |
| IBC | 20.20 | 下跌 | 下跌 | | 20.70 | | | | 21.22 | | |
| IDI | 5.20 | 上漲 | 下跌 | 5.45 | 5.13 | -4.59% | | | 5.89 | | |
| IJC | 14.50 | 上漲 | 上漲 | 14.65 | 13.94 | -1.02% | | 13.10 | 12.68 | 10.69% | |
| ITA | 2.66 | 下跌 | 下跌 | | 2.85 | | | | 3.30 | | |
| KBC | 14.85 | 下跌 | 上漲 | | 15.08 | | | 14.85 | 14.00 | 0.02% | |
| KDC | 18.50 | 下跌 | 上漲 | | 19.55 | | | 20.82 | 18.08 | -11.13% | |
| KOS | 27.70 | 上漲 | 上漲 | 26.80 | 26.82 | 3.36% | | 26.30 | 25.20 | 5.32% | |
| KSB | 17.85 | 上漲 | 下跌 | 17.75 | 17.04 | 0.56% | | | 19.42 | | |
| LDG | 8.50 | 下跌 | 下跌 | | 9.24 | | | | 10.22 | | |
| LPB | 7.20 | 下跌 | 下跌 | | 7.65 | | | | 8.13 | | |
| MBG | 24.50 | 下跌 | 下跌 | | 31.64 | | | | 47.45 | | |
| MBS | 15.20 | 上漲 | 下跌 | 14.70 | 14.18 | 3.40% | | | 15.75 | | |
| MPC | 20.60 | 上漲 | 下跌 | 20.10 | 19.76 | 2.49% | | | 23.55 | | |

We Create Fortune

| | | | | | | | | | | | |
|-----|-------|----|------|-------|-------|--------|----|-------|-------|---------|----|
| NBB | 19.90 | 下跌 | 下跌 | | 21.04 | | | | 22.02 | | |
| NKG | 6.77 | 上漲 | 上漲 | 6.50 | 6.75 | 4.15% | | 7.11 | 6.45 | -4.78% | 買進 |
| NLG | 26.50 | 下跌 | 上漲 | | 27.53 | | | 26.28 | 26.30 | 0.83% | |
| NT2 | 22.30 | 下跌 | 下跌 | | 22.82 | | | | 24.05 | | |
| NTL | 23.85 | 上漲 | 下跌 | 24.40 | 23.42 | -2.25% | | | 24.88 | | |
| NVB | 9.60 | 上漲 | 上漲 | 7.60 | 9.16 | 26.32% | | 8.50 | 8.20 | 12.94% | |
| OGC | 3.68 | 上漲 | 下跌 | 3.75 | 3.51 | -1.87% | | | 4.07 | | |
| PC1 | 17.50 | 下跌 | 下跌 | | 18.12 | | | | 20.48 | | |
| PDR | 25.50 | 下跌 | 上漲 | | 27.13 | | | 23.59 | 25.39 | 8.07% | |
| PHR | 51.10 | 下跌 | 下跌 | | 54.87 | | | | 63.14 | | |
| PPC | 28.50 | 上漲 | 上漲 | 28.30 | 27.77 | 0.71% | | 28.40 | 24.50 | 0.35% | |
| PTB | 72.00 | 下跌 | 上漲 | | 72.64 | | | 60.78 | 68.51 | 18.46% | |
| PVD | 15.20 | 下跌 | 下跌 | | 15.20 | | | | 17.08 | | |
| PVI | 31.00 | 下跌 | 下跌 | | 31.93 | | | | 34.22 | | |
| PVS | 17.90 | 上漲 | 下跌 | 17.80 | 16.94 | 0.56% | | | 19.30 | | |
| PVT | 16.60 | 下跌 | 上漲 | | 17.18 | | | 17.31 | 16.28 | -4.08% | |
| QCG | 4.11 | 下跌 | 下跌 | | 4.37 | | | | 4.86 | | |
| SCR | 5.54 | 下跌 | 上漲 | | 5.99 | | | 6.33 | 5.40 | -12.48% | |
| SGP | 7.10 | 下跌 | 下跌 | | 7.79 | | | | 9.75 | | |
| SHB | 6.20 | 上漲 | 下跌 | 6.40 | 5.95 | -3.13% | | | 6.73 | | |
| SHS | 7.80 | 下跌 | 上漲 | | 8.06 | | | 8.40 | 7.36 | -7.14% | |
| SZC | 16.75 | 下跌 | #N/A | | 17.40 | | | | #N/A | | |
| TCH | 28.05 | 下跌 | 上漲 | 23.30 | 28.08 | 20.52% | 賣出 | 26.15 | 25.35 | 7.27% | |
| TCM | 19.40 | 上漲 | 下跌 | 19.95 | 19.14 | -2.76% | | | 22.29 | | |
| TDH | 9.92 | 下跌 | 下跌 | 10.25 | 9.92 | -3.18% | 賣出 | | 11.11 | | |
| TNG | 15.50 | 上漲 | 下跌 | 15.10 | 14.47 | 2.65% | | | 16.69 | | |
| TTB | 3.67 | 下跌 | 下跌 | | 5.19 | | | | 9.73 | | |
| VGC | 18.05 | 下跌 | 下跌 | | 18.42 | | | | 19.68 | | |
| VGT | 8.10 | 下跌 | 下跌 | | 8.90 | | | | 8.95 | | |
| VHC | 77.00 | 下跌 | 下跌 | | 81.16 | | | | 83.84 | | |
| VND | 14.55 | 上漲 | 下跌 | 14.10 | 13.88 | 3.19% | | | 14.88 | | |
| VNG | 19.85 | 下跌 | 下跌 | | 20.95 | | | | 22.24 | | |
| VPI | 41.20 | 下跌 | 上漲 | | 42.10 | | | 41.30 | 39.68 | -0.24% | |

We Create Fortune

SMALLCAPS 小型股票趨勢追蹤表

| 股票 | 價格 | 短期趨勢 | 中期趨勢 | 短期買進價格 | 短期停損 | 暫計短期利潤% | 短期訊號 | 中期買進價格 | 中期停損 | 暫計中期利潤% | 中期訊號 |
|-----------|-------|------|------|--------|-------|---------|------|--------|-------|---------|------|
| AAV | 7.80 | 下跌 | 下跌 | | 8.31 | | | | 9.44 | | |
| AGR | 3.47 | 下跌 | 下跌 | | 3.57 | | | | 4.20 | | |
| AMD | 2.46 | 下跌 | 上漲 | 1.77 | 2.53 | 43.19% | 賣出 | 1.70 | 1.60 | 44.71% | |
| APG | 9.60 | 上漲 | 上漲 | 8.76 | 9.49 | 9.59% | | 9.90 | 8.56 | -3.03% | |
| ART | 2.70 | 上漲 | 上漲 | 2.00 | 2.43 | 35.00% | | 2.30 | 1.54 | 17.39% | |
| BCG | 8.14 | 下跌 | 上漲 | | 8.65 | | | 6.39 | 7.47 | 27.39% | |
| C4G | 5.90 | 下跌 | 下跌 | | 6.24 | | | | 6.98 | | |
| C69 | 8.90 | 下跌 | 下跌 | | 10.45 | | | | 17.51 | | |
| CCL | 7.21 | 上漲 | 上漲 | 6.80 | 6.91 | 6.03% | | 7.88 | 5.58 | -8.50% | |
| CVT | 20.40 | 下跌 | 下跌 | | 21.33 | | | | 22.85 | | |
| DAH | 10.30 | 上漲 | 下跌 | 9.99 | 9.51 | 3.10% | | | 11.27 | | |
| DLG | 1.60 | 下跌 | 下跌 | 1.60 | 1.63 | 2.06% | 賣出 | | 1.65 | | |
| DRH | 4.37 | 下跌 | 下跌 | | 4.81 | | | | 5.83 | | |
| DTD | 9.70 | 下跌 | 下跌 | | 10.59 | | | | 13.70 | | |
| EVG | 2.63 | 下跌 | 下跌 | | 2.76 | | | | 2.90 | | |
| FIT | 9.10 | 上漲 | 上漲 | 4.49 | 7.81 | 102.67% | | 3.64 | 4.64 | 150.00% | |
| FTM | 2.34 | 下跌 | 下跌 | | 2.71 | | | | 4.98 | | |
| FUES SV50 | 12.45 | 下跌 | 下跌 | | 12.71 | | | | 13.26 | | |
| GKM | 14.90 | 上漲 | 下跌 | 15.00 | 14.44 | -0.67% | | | 15.51 | | |
| HAH | 12.00 | 下跌 | 下跌 | | 12.67 | | | | 14.16 | | |
| HAI | 3.72 | 上漲 | 上漲 | 1.69 | 3.68 | 120.12% | | 1.88 | 2.21 | 97.87% | |
| HAR | 4.50 | 下跌 | 上漲 | | 5.18 | | | 3.90 | 3.28 | 15.38% | |
| HDA | 10.20 | 下跌 | 下跌 | | 10.87 | | | | 11.79 | | |
| HHP | 12.00 | 上漲 | 下跌 | 12.20 | 11.54 | -1.64% | | | 13.24 | | |
| HHS | 3.24 | 下跌 | 上漲 | 3.43 | 3.30 | -3.85% | 賣出 | 3.36 | 2.94 | -3.57% | |
| HID | 2.16 | 下跌 | 上漲 | | 2.27 | | | 2.63 | 2.16 | -17.87% | |
| HII | 10.00 | 上漲 | 下跌 | 10.20 | 9.88 | -1.96% | | | 11.16 | | |
| HQC | 1.09 | 下跌 | 下跌 | 1.05 | 1.10 | 5.07% | 賣出 | | 1.12 | | |
| HSL | 7.59 | 下跌 | 下跌 | | 8.08 | | | | 8.77 | | |
| HUT | 2.50 | 上漲 | 下跌 | 2.40 | 2.38 | 4.17% | | | 2.71 | | |
| HVG | 8.31 | 上漲 | 上漲 | 7.82 | 7.83 | 6.27% | | 3.90 | 6.61 | 113.08% | |
| HVH | 17.90 | 上漲 | 下跌 | 17.90 | 17.78 | 0.00% | 買進 | | 20.24 | | |
| IDJ | 6.70 | 下跌 | 上漲 | | 7.37 | | | 7.20 | 5.42 | -6.94% | |
| JVC | 3.61 | 下跌 | 下跌 | | 3.94 | | | | 4.75 | | |

We Create Fortune

| | | | | | | | | | | | |
|-----|-------|----|------|-------|-------|---------|----|-------|-------|---------|----|
| KLF | 1.70 | 上漲 | 上漲 | 1.40 | 1.52 | 21.43% | | 1.50 | 0.95 | 13.33% | |
| LCG | 8.15 | 上漲 | 下跌 | 8.54 | 7.97 | -4.57% | | | 8.76 | | |
| LGL | 7.68 | 下跌 | 下跌 | | 8.88 | | | 7.11 | 8.39 | 17.90% | |
| LHG | 15.20 | 下跌 | 下跌 | | 15.65 | | | | 16.89 | | |
| LMH | 11.75 | 下跌 | #N/A | | 12.26 | | | | #N/A | | |
| MST | 4.70 | 下跌 | 上漲 | 3.80 | 4.79 | 26.10% | 賣出 | 3.40 | 4.08 | 38.24% | |
| NDN | 16.90 | 上漲 | 上漲 | 17.40 | 16.71 | -2.87% | | 13.10 | 16.27 | 28.96% | |
| PHC | 10.85 | 下跌 | 下跌 | | 11.40 | | | 12.20 | 11.21 | -8.08% | 賣出 |
| PLP | 9.80 | 下跌 | 下跌 | | 10.28 | | | | 11.39 | | |
| PVB | 18.70 | 下跌 | 上漲 | | 19.03 | | | 19.42 | 18.62 | -3.69% | 賣出 |
| PVC | 7.00 | 下跌 | 上漲 | | 7.26 | | | 6.70 | 6.66 | 4.48% | |
| PVX | 1.20 | 下跌 | 下跌 | | 1.34 | | | | 1.46 | | |
| PXL | 7.50 | 下跌 | 上漲 | | 8.19 | | | 6.70 | 6.64 | 11.94% | |
| SHI | 9.00 | 下跌 | 上漲 | | 9.22 | | | 5.77 | 8.30 | 56.11% | |
| SJF | 2.24 | 下跌 | 下跌 | | 2.35 | | | | 2.79 | | |
| SPP | 2.10 | 下跌 | 下跌 | | 2.14 | | | | 2.70 | | |
| TDC | 8.30 | 下跌 | 下跌 | | 8.41 | | | | 9.13 | | |
| TIG | 6.30 | 下跌 | 上漲 | | 7.05 | | | 3.20 | 5.49 | 96.88% | |
| TLH | 4.19 | 上漲 | 下跌 | 4.06 | 4.09 | 3.20% | | | 4.43 | | |
| TNA | 26.95 | 上漲 | 上漲 | 13.70 | 24.59 | 96.72% | | 11.45 | 21.09 | 135.35% | |
| TNI | 10.10 | 下跌 | 上漲 | | 11.01 | | | 10.90 | 9.89 | -7.34% | |
| TSC | 2.79 | 上漲 | 下跌 | 2.95 | 2.78 | -5.42% | | | 3.45 | | |
| TTF | 2.74 | 上漲 | 下跌 | 2.74 | 2.73 | 0.00% | 買進 | | 3.20 | | |
| TTH | 2.70 | 下跌 | 下跌 | | 2.73 | | | | 3.03 | | |
| TVC | 17.50 | 上漲 | 上漲 | 16.90 | 16.46 | 3.55% | | 14.30 | 14.73 | 22.38% | |
| VC3 | 17.50 | 上漲 | 上漲 | 17.60 | 16.87 | -0.57% | | 22.00 | 16.32 | -20.45% | |
| VCR | 13.10 | 上漲 | 下跌 | 14.60 | 13.05 | -10.27% | | | 19.21 | | |
| VNA | 2.80 | 下跌 | 下跌 | | 3.47 | | | | 5.14 | | |
| VNE | 3.50 | 下跌 | 下跌 | 3.80 | 3.58 | -5.88% | 賣出 | | 3.70 | | |
| VRC | 24.95 | 上漲 | 上漲 | 16.05 | 22.72 | 55.45% | | 17.30 | 20.63 | 44.22% | |



We Create Fortune

胡志明市交易所 (HSX)

| | 收盤 | 漲跌% |
|----------|--------|--------|
| VNI | 952.26 | 0.12% |
| VN30 | 862.23 | -0.11% |
| VN Mid | 924.84 | -0.50% |
| VN Small | 792.11 | -0.13% |

河內交易所 (HSX)

| | 收盤 | 漲跌% |
|-----------|--------|--------|
| HNI | 102 | 0.20% |
| HN30 | 181.98 | 0.37% |
| VNX AllSh | 834.64 | -0.10% |

UPCOM 市場 (UPCoM)

| | 收盤 | 漲跌% |
|-------|-------|-------|
| UPCoM | 55.47 | 0.31% |

| 外資交易 | 成交值(十億盾) | |
|-------|----------|--|
| 買進 | 833.09 | |
| 賣出 | 639.71 | |
| 買超/賣超 | 193.38 | |

| 外資交易 | 成交值(十億盾) | |
|-------|----------|--|
| 買進 | 2.23 | |
| 賣出 | 5.80 | |
| 買超/賣超 | -3.57 | |

| 外資交易 | 成交值(十億盾) | |
|-------|----------|--|
| 買進 | 6.33 | |
| 賣出 | 2.81 | |
| 買超/賣超 | 3.52 | |

| 上漲排名/股碼 | 漲跌(VND) | 漲跌% |
|---------|---------|-------|
| TTF | 140 | 5.38% |
| FIT | 400 | 4.60% |
| KSB | 500 | 2.88% |
| HVN | 900 | 2.70% |
| SMB | 900 | 2.34% |

| 上漲排名/股碼 | 漲跌(VND) | 漲跌% |
|---------|---------|-------|
| MBS | 1000 | 7.04% |
| TNG | 600 | 4.03% |
| TAR | 900 | 3.15% |
| PLC | 300 | 2.75% |
| TVC | 300 | 1.74% |

| 上漲排名/股碼 | 漲跌(VND) | 漲跌% |
|---------|---------|-------|
| KDF | 1500 | 5.00% |
| VTP | 3800 | 3.36% |
| BOT | 500 | 0.91% |
| VIB | 100 | 0.59% |
| SDI | 400 | 0.36% |

| 下跌排名/股碼 | 漲跌(VND) | 漲跌% |
|---------|---------|--------|
| HAI | -280 | -7.00% |
| HQC | -80 | -6.84% |
| TCH | -1450 | -4.92% |
| HHS | -160 | -4.71% |
| TNI | -300 | -2.88% |

| 下跌排名/股碼 | 漲跌(VND) | 漲跌% |
|---------|---------|--------|
| CSC | -3800 | -9.82% |
| TIG | -200 | -3.08% |
| MBG | -500 | -2.00% |
| NVB | -100 | -1.03% |
| VCS | -800 | -0.96% |

| 下跌排名/股碼 | 漲跌(VND) | 漲跌% |
|---------|---------|--------|
| CTR | -2300 | -5.42% |
| OIL | -400 | -4.40% |
| BSR | -200 | -2.41% |
| LPB | -100 | -1.37% |
| NTC | -2000 | -1.19% |

*備註：市值>5,000 億盾；成交值>15 億盾

| 市值排名/股碼 | 十億盾 |
|---------|---------|
| VIC | 390,081 |
| VCB | 326,381 |
| VHM | 275,990 |
| VNM | 208,443 |
| GAS | 183,356 |

| 市值排名/股碼 | 十億盾 |
|---------|--------|
| ACB | 37,272 |
| VCS | 13,152 |
| VCG | 11,882 |
| PVS | 8,556 |
| SHB | 7,459 |

| 市值排名/股碼 | 十億盾 |
|---------|---------|
| ACV | 162,787 |
| VGI | 76,311 |
| VEA | 64,525 |
| MCH | 50,896 |
| GVR | 47,720 |

| 交易量排名/股碼 | 成交值 | 30 日均 |
|----------|------------|------------|
| ROS | 33,662,550 | 35,616,592 |
| HAI | 12,877,590 | 5,174,479 |
| TCB | 12,846,590 | 5,213,676 |
| HPG | 11,868,740 | 7,762,931 |
| AMD | 9,124,080 | 4,801,298 |

| 交易量排名/股碼 | 成交值 | 30 日均 |
|----------|-----------|-----------|
| SHB | 2,917,570 | 3,014,517 |
| VCG | 2,803,692 | 537,134 |
| KLF | 2,525,416 | 1,959,060 |
| ART | 2,328,211 | 1,755,630 |
| HUT | 2,146,241 | 1,246,088 |

| 交易量排名/股碼 | 成交值 | 30 日均 |
|----------|-----------|-----------|
| SIP | 1,857,472 | 225,958 |
| BSR | 1,240,446 | 1,606,505 |
| TOP | 434,800 | 151,145 |
| CTR | 432,790 | 295,258 |
| GVR | 386,740 | 401,710 |

資料源: Bloomberg & Yuanta Research

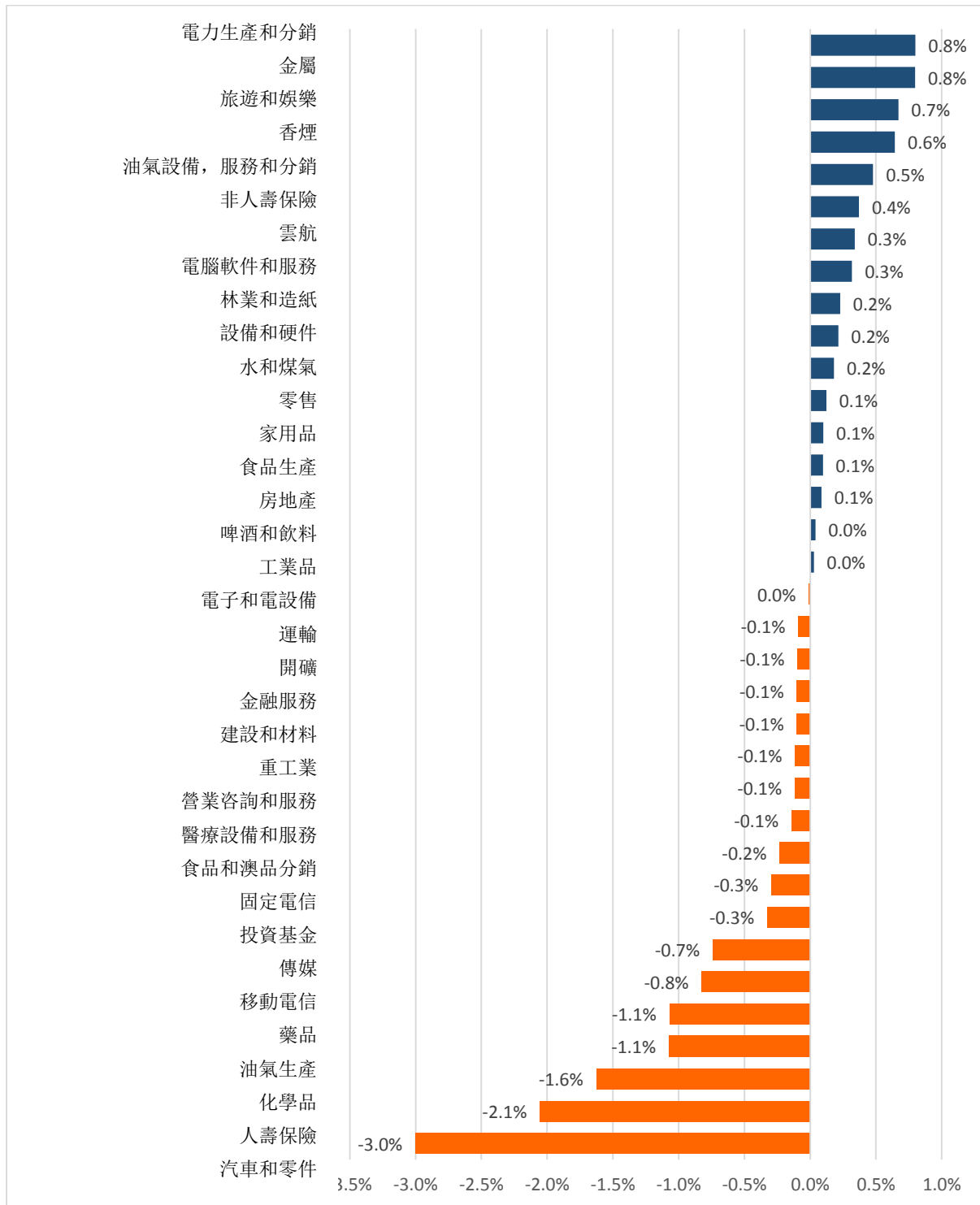
資料源: Bloomberg & Yuanta Research

資料源: Bloomberg & Yuanta Research



We Create Fortune

各行業板塊的交易走勢



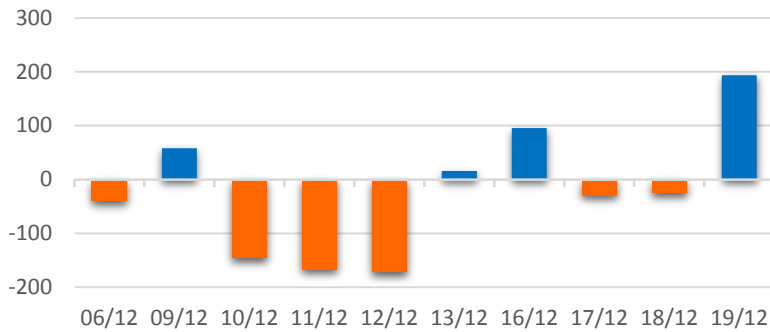
資料源: FiinPro - YSVN



We Create Fortune

外資買進賣統計

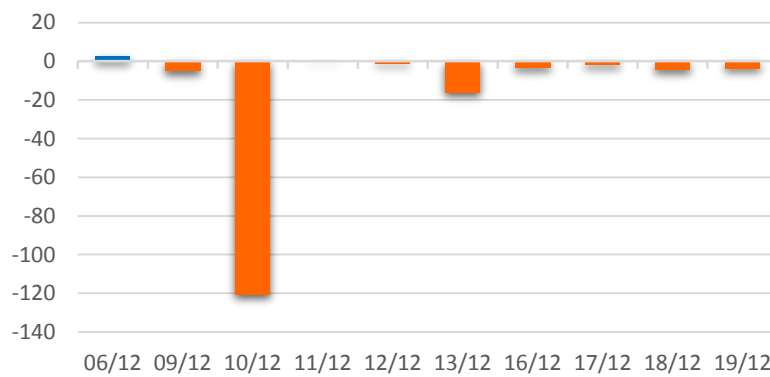
HSX 外資每日買/賣超



| 證券代碼 | 買超金額 (百萬盾) | 證券代碼 | 賣超金額 (百萬盾) |
|---------|------------|------|------------|
| VNM | 87,835 | VIC | 40,913 |
| VCB | 65,363 | STB | 9,172 |
| E1VFN30 | 30,604 | MSN | 6,646 |
| HPG | 22,882 | HDB | 5,218 |
| KBC | 19,973 | PHR | 3,997 |

HSX 外資買/賣超的前 5 名

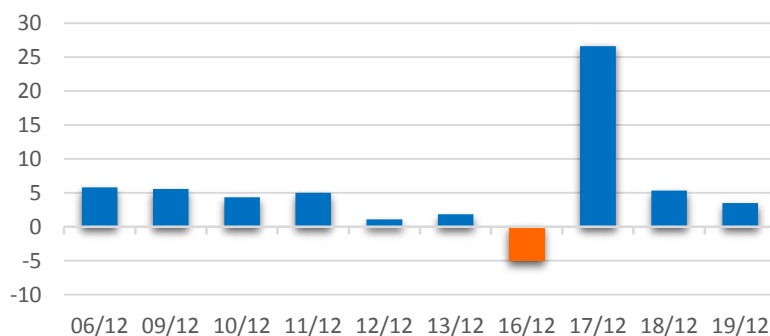
HNX 外資每日買/賣超



| 證券代碼 | 買超金額 (百萬盾) | 證券代碼 | 賣超金額 (百萬盾) |
|------|------------|------|------------|
| HUT | 1,008 | SHB | 3,790 |
| IDV | 319 | VNR | 875 |
| MST | 187 | HDA | 298 |
| TIG | 112 | VCS | 190 |
| IVS | 85 | LHC | 124 |

HNX 外資買/賣超的前 5 名

UPCOM 外資每日買/賣超



| 證券代碼 | 買超金額 (百萬盾) | 證券代碼 | 賣超金額 (百萬盾) |
|------|------------|------|------------|
| VTP | 2,815 | VEA | 3,049 |
| LPB | 2,028 | ACV | 2,509 |
| QNS | 1,401 | HND | 2,445 |
| GVR | 855 | BSR | 2,203 |
| SKH | 134 | OIL | 662 |

UPCOM 外資買/賣超的前 5 名

源: FiinPro - YSVN



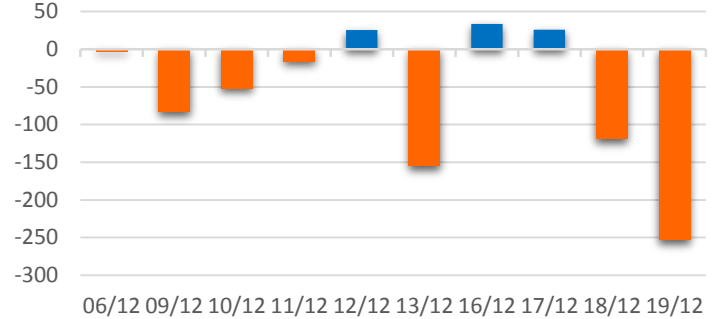
We Create **Fortune**

自營進出統計

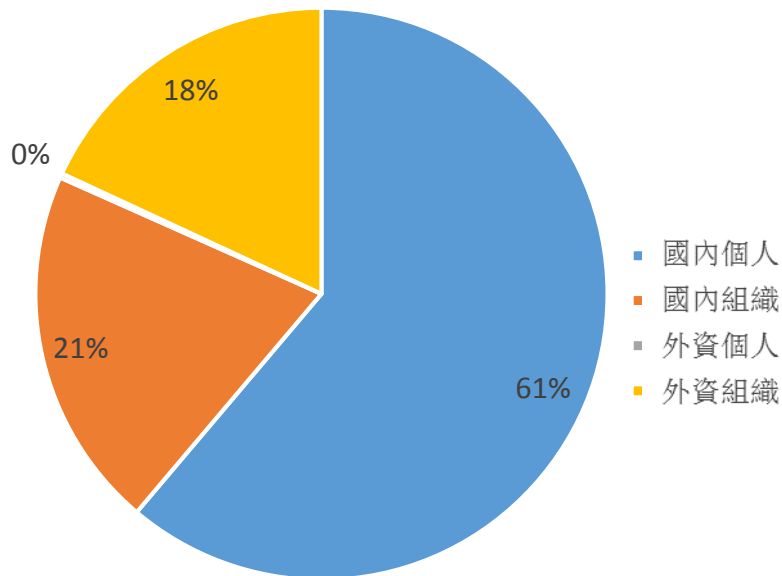
| 證券代碼 | 買超金額 (百萬盾) | 證券代碼 | 賣超金額 (百萬盾) |
|------|------------|---------|------------|
| TCB | 46,097 | E1VFN30 | 33,134 |
| TPB | 37,740 | VNM | 24,604 |
| MSN | 5,675 | TCB | 23,549 |
| VHM | 4,713 | GEX | 22,303 |
| HPG | 4,524 | VIC | 22,108 |

券商自營交易最大前名

券商自營交易每日買/賣超 (bil.VND)



越南證券市場投資人類別統計

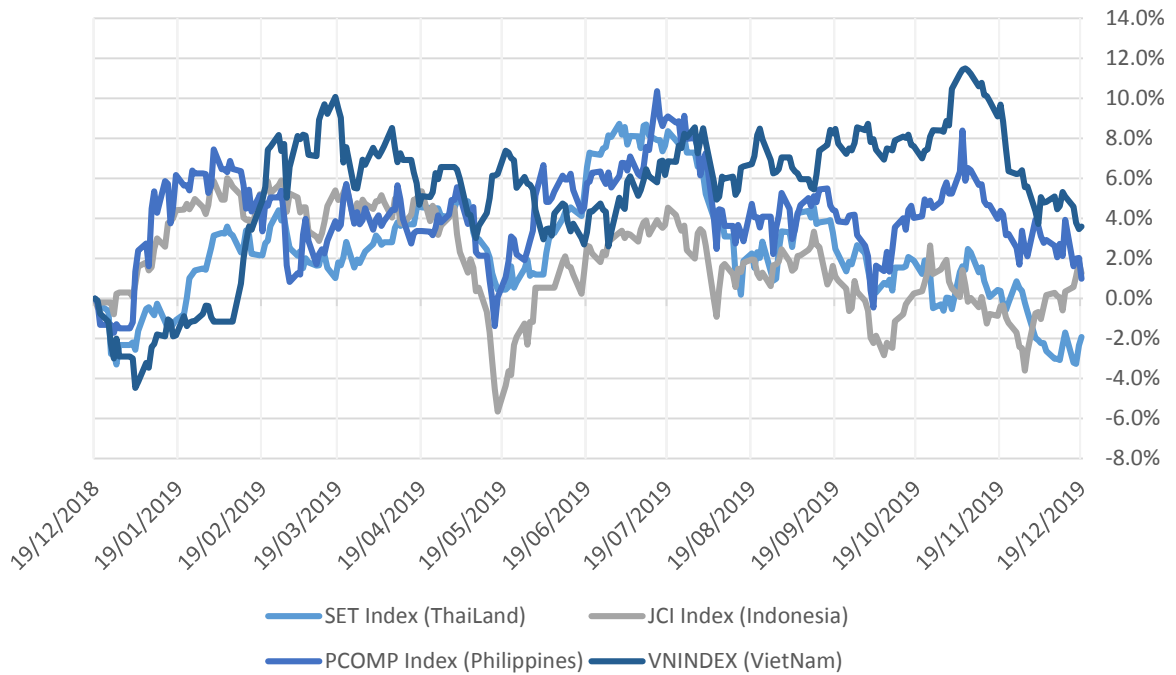


資料源: FiiPro - YSVN



We Create Fortune

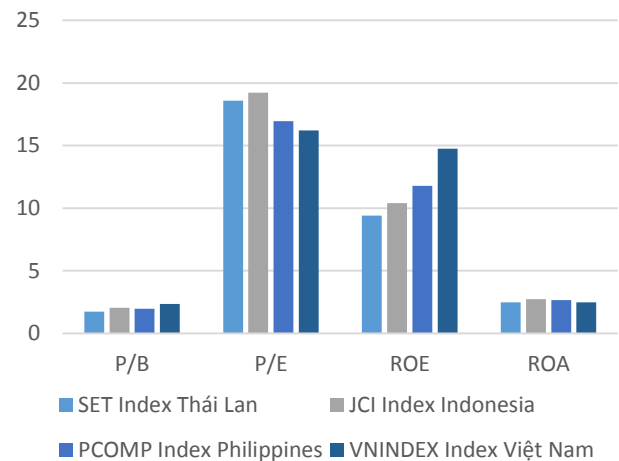
東南亞主要市場走勢比較



東南亞主要市場數據

| | | Thailand | Indonesia | Philippines | Vietnam |
|-----------|-----------|----------|-----------|-------------|---------|
| P/B | | 1.7x | 2.1x | 1.9x | 2.3x |
| P/E | | 18.8x | 19.6x | 16.6x | 15.6x |
| ROE | % | 9.28 | 10.61 | 11.79 | 14.74 |
| ROA | % | 2.41 | 2.79 | 2.66 | 2.42 |
| Vốn hóa | Tỷ USD | 547.91 | 519.55 | 190.59 | 140.00 |
| GTGD | Triệu USD | 1.42 | 0.51 | 0.10 | 0.14 |
| LS cổ tức | % | 3.22 | 2.42 | 1.64 | 2.03 |

源：Bloomberg & YSVN





We Create **Fortune**

元大證券（越南）公司

個人客戶分析部

Nguyễn Th ê Minh

研究分析經理

+84 28 3622 6868 ext 3826

minh.nguyen@yuanta.com.vn

Quách Đức Khánh

高級分析專員

+84 28 3622 6868 ext 3833

khanh.quach@yuanta.com.vn

Phạm Tấn Phát

高級分析專員

+84 28 3622 6868 ext 3880

phat.pham@yuanta.com.vn

Nguyễn Trịnh Ngọc Hồng

分析專員

+84 28 3622 6868 ext 3832

hong.nguyen@yuanta.com.vn

個人客戶業務部

Nguyễn Thanh Tùng

總公司業務經理

+84 28 3622 6868 ext 3609

tung.nguyen@yuanta.com.vn

Chung Kim Hoa

華人客戶部經理

+84 28 3622 6868 ext 3828

hoa.chung@yuanta.com.vn

Phù Vĩnh Qu ê

堤岸分行經理

+84 28 3622 6868

que.phu@yuanta.com.vn

Nguyễn Việt Quang

河內分行經理

+84 28 3622 6868 ext 3404

quang.nguyen@yuanta.com.vn

Võ Thị Thu Thủy

平陽分行經理

+84 28 3622 6868 ext 3505

thuy.vo@yuanta.com.vn

Bùi Quốc Phong

同奈分行經理

+84 28 3622 6868

phong.bui@yuanta.com.vn

Nguyễn Đức Hoàn

河內南部營業中心經理

+84 28 3622 6868 ext 3409

hoan.nguyen@yuanta.com.vn

Võ Đình Tuấn

峴港分行經理

+84 28 3622 6868 ext 3301

tuan.vo@yuanta.com.vn



We Create **Fortune**

Appendix A: Important Disclosures

Analyst Certification

Each research analyst primarily responsible for the content of this research report, in whole or in part, certifies that with respect to each security or issuer that the analyst covered in this report: (1) all of the views expressed accurately reflect his or her personal views about those securities or issuers; and (2) no part of his or her compensation was, is, or will be, directly or indirectly, related to the specific recommendations or views expressed by that research analyst in the research report.

Ratings Definitions

BUY: We have a positive outlook on the stock based on our expected absolute or relative return over the investment period. Our thesis is based on our analysis of the company's outlook, financial performance, catalysts, valuation and risk profile. We recommend investors add to their position.

HOLD-Outperform: In our view, the stock's fundamentals are relatively more attractive than peers at the current price. Our thesis is based on our analysis of the company's outlook, financial performance, catalysts, valuation and risk profile.

HOLD-Underperform: In our view, the stock's fundamentals are relatively less attractive than peers at the current price. Our thesis is based on our analysis of the company's outlook, financial performance, catalysts, valuation and risk profile.

SELL: We have a negative outlook on the stock based on our expected absolute or relative return over the investment period. Our thesis is based on our analysis of the company's outlook, financial performance, catalysts, valuation and risk profile. We recommend investors reduce their position.

Under Review: We actively follow the company, although our estimates, rating and target price are under review.

Restricted: The rating and target price have been suspended temporarily to comply with applicable regulations and/or Yuanta policies.

Note: Yuanta research coverage with a Target Price is based on an investment period of 12 months. Greater China Discovery Series coverage does not have a formal 12 month Target Price and the recommendation is based on an investment period specified by the analyst in the report.

Global Disclaimer

© 2018 Yuanta. All rights reserved. The information in this report has been compiled from sources we believe to be reliable, but we do not hold ourselves responsible for its completeness or accuracy. It is not an offer to sell or solicitation of an offer to buy any securities. All opinions and estimates included in this report constitute our judgment as of this date and are subject to change without notice.

This report provides general information only. Neither the information nor any opinion expressed herein constitutes an offer or invitation to make an offer to buy or sell securities or other investments. This material is prepared for general circulation to clients and is not intended to provide tailored investment advice and does not take into account the individual financial situation and objectives of any specific person who may receive this report. Investors should seek financial advice regarding the appropriateness of investing in any securities, investments or investment strategies discussed or recommended in this report. The information contained in this report has been compiled from sources believed to be reliable but no representation or warranty, express or implied, is made as to its accuracy, completeness or correctness. This report is not (and should not be construed as) a solicitation to act as securities broker or dealer in any jurisdiction by any person or company that is not legally permitted to carry on such business in that jurisdiction.

Yuanta research is distributed in the United States only to Major U.S. Institutional Investors (as defined in Rule 15a-6 under the Securities Exchange Act of 1934, as amended and SEC staff interpretations thereof). All transactions by a US person in the securities mentioned in this report must be effected through a registered broker-dealer under Section 15 of the Securities Exchange Act of 1934, as amended. Yuanta research is distributed in Taiwan by Yuanta Securities Investment Consulting. Yuanta research is distributed in Hong Kong by Yuanta Securities (Hong Kong) Co. Limited, which is licensed in Hong Kong by the Securities and Futures Commission for regulated activities, including Type 4 regulated activity (advising on securities). In Hong Kong, this research report may not be redistributed, retransmitted or disclosed, in whole or in part or any form or manner, without the express written